

Product datasheet for TA385112

Rab9 (RAB9A) Rabbit Polyclonal Antibody

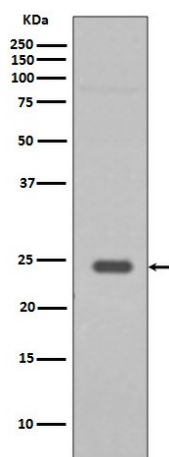
Product data:

Product Type:	Primary Antibodies
Applications:	IF, WB
Recommended Dilution:	WB: 1/500-1/2000 ICC/IF: 1/50-1/200
Reactivity:	Human, Mouse, Rat
Host:	Rabbit
Isotype:	IgG
Clonality:	Polyclonal
Immunogen:	A synthesized peptide derived from human Rab9
Formulation:	Rabbit IgG in phosphate buffered saline , pH 7.4, 150mM NaCl, 0.02% sodium azide and 50% glycerol.
Concentration:	lot specific
Purification:	Affinity Chromatography
Conjugation:	Unconjugated
Storage:	Store at 4°C short term. Aliquot and store at -20°C long term. Avoid freeze/thaw cycles.
Stability:	1 year
Predicted Protein Size:	23kDa
Gene Name:	RAB9A, member RAS oncogene family
Database Link:	Entrez Gene 9367 Human P51151
Background:	Swiss-Prot Acc.P51151.Involved in the transport of proteins between the endosomes and the trans Golgi network. Interacts (preferentially in its GTP-bound form) with GCC2 (via its GRIP domain).
Synonyms:	Rab-9A; RAB9



[View online »](#)

Product images:



Western blot analysis of Rab9 in HepG2 lysates using Rab9 antibody.