

## Product datasheet for **TA385108**

### **RAB7 (RAB7A) Rabbit Polyclonal Antibody**

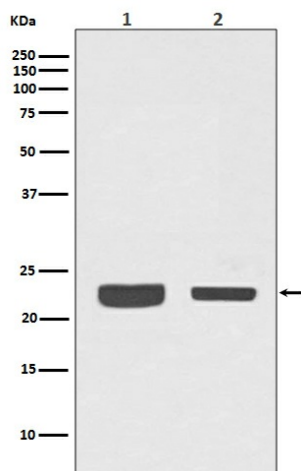
#### **Product data:**

<b>Product Type:</b>	Primary Antibodies
<b>Applications:</b>	FC, IF, IHC, WB
<b>Recommended Dilution:</b>	WB: 1/1000-1/2000 IHC: 1/50-1/200 ICC/IF: 1/50-1/200 FC: 1/50
<b>Reactivity:</b>	Human, Mouse, Rat
<b>Host:</b>	Rabbit
<b>Isotype:</b>	IgG
<b>Clonality:</b>	Polyclonal
<b>Immunogen:</b>	A synthesized peptide derived from human RAB7
<b>Formulation:</b>	Rabbit IgG in phosphate buffered saline , pH 7.4, 150mM NaCl, 0.02% sodium azide and 50% glycerol.
<b>Concentration:</b>	lot specific
<b>Purification:</b>	Affinity Chromatography
<b>Conjugation:</b>	Unconjugated
<b>Storage:</b>	Store at 4°C short term. Aliquot and store at -20°C long term. Avoid freeze/thaw cycles.
<b>Stability:</b>	1 year
<b>Predicted Protein Size:</b>	23kDa
<b>Gene Name:</b>	RAB7A, member RAS oncogene family
<b>Database Link:</b>	<a href="#">Entrez Gene 7879 Human P51149</a>
<b>Background:</b>	Swiss-Prot Acc.P51149.Plays a role in the fusion of phagosomes with lysosomes. Plays important roles in microbial pathogen infection and survival, as well as in participating in the life cycle of viruses. Microbial pathogens possess survival strategies governed by RAB7A, sometimes by employing RAB7A function (e.g. Salmonella) and sometimes by excluding RAB7A function.
<b>Synonyms:</b>	FLJ20819; PRO2706; RAB7

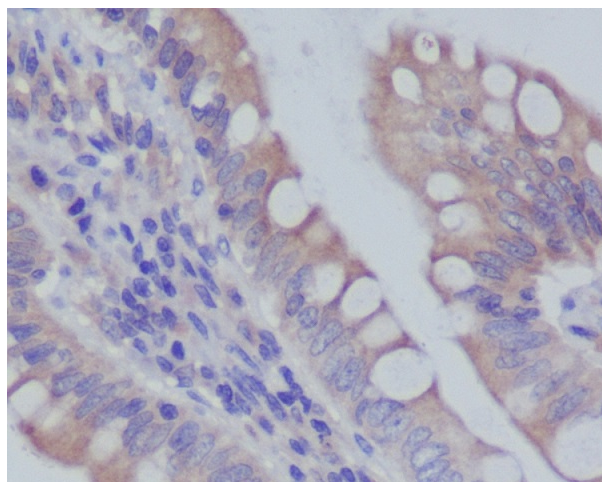


[View online »](#)

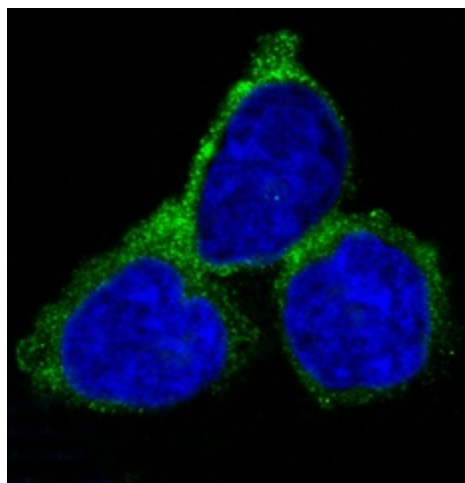
## Product images:



Western blot analysis of RAB7 in (1) A375 lysates; (2) 3T3 lysates using Rab7 antibody.



Immunohistochemistry analysis of paraffin-embedded Human colon using RAB7 antibody. High-pressure and temperature Sodium Citrate pH 6.0 was used for antigen retrieval.



Immunofluorescence analysis of Rab7 in HeLa using RAB7 antibody.