

## Product datasheet for **TA385106M**

### **Rab5 (RAB5A) Rabbit Monoclonal Antibody [Clone ID: R01-6G5]**

#### **Product data:**

Product Type:	Primary Antibodies
Clone Name:	R01-6G5
Applications:	IF, IHC, IP, WB
Recommended Dilution:	WB: 1/1000 IHC: 1/500 ICC/IF: 1/50 IP: 1/20
Reactivity:	Human, Mouse, Rat
Host:	Rabbit
Isotype:	IgG
Clonality:	Monoclonal
Immunogen:	A synthetic peptide of human Rab5
Formulation:	50mM Tris-Glycine(pH 7.4), 0.15M NaCl, 40% Glycerol, 0.01% Sodium azide and 0.05% BSA
Concentration:	lot specific
Purification:	Affinity Purified
Conjugation:	Unconjugated
Storage:	Store at 4°C short term. Aliquot and store at -20°C long term. Avoid freeze/thaw cycles.
Stability:	1 year
Predicted Protein Size:	Calculated MW: 24 kDa; Observed MW: 24 kDa
Gene Name:	RAB5A, member RAS oncogene family
Database Link:	<a href="#">Entrez Gene 5868 Human P20339</a>



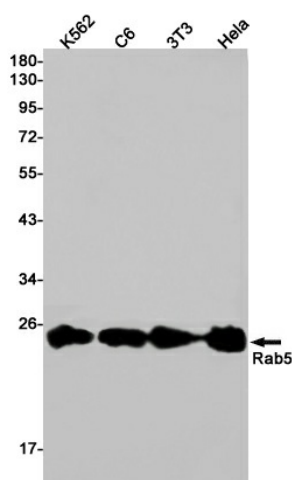
[View online »](#)

**Background:**

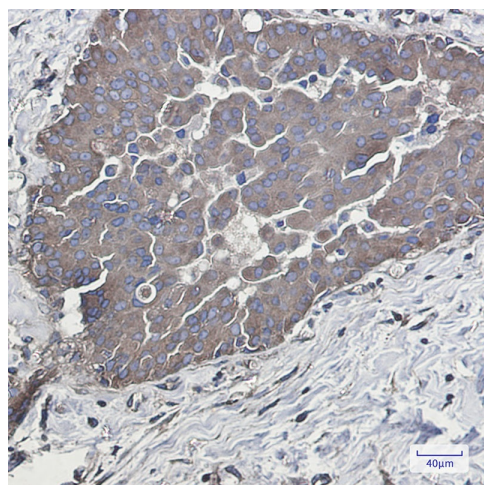
Swiss-Prot Acc.P20339. The small GTPases Rab are key regulators of intracellular membrane trafficking, from the formation of transport vesicles to their fusion with membranes. Rabs cycle between an inactive GDP-bound form and an active GTP-bound form that is able to recruit to membranes different sets of downstream effectors directly responsible for vesicle formation, movement, tethering and fusion. RAB5A is required for the fusion of plasma membranes and early endosomes (PubMed:10818110, PubMed:14617813, PubMed:16410077, PubMed:15378032). Contributes to the regulation of filopodia extension (PubMed:14978216). Required for the exosomal release of SDCBP, CD63, PDCD6IP and syndecan (PubMed:22660413). Regulates maturation of apoptotic cell-containing phagosomes, probably downstream of DYN2 and PIK3C3 .

**Synonyms:**

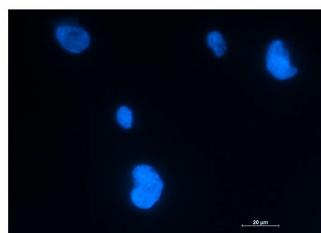
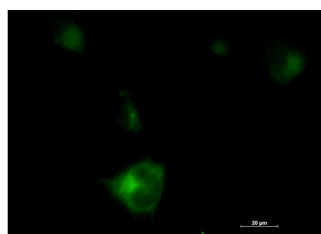
RAB5

**Product images:**


Western blot analysis of Rab5 in K562, C6, 3T3, HeLa lysates using Rab5 antibody.



Immunohistochemistry analysis of paraffin-embedded Human breast cancer tissue using Rab5 antibody. High-pressure and temperature Sodium Citrate pH 6.0 was used for antigen retrieval.



Immunocytochemistry analysis of Rab5 (green) in HT-1080 using Rab5 antibody, and DAPI (blue).