

Product datasheet for **TA385104**

RAB2B Rabbit Polyclonal Antibody

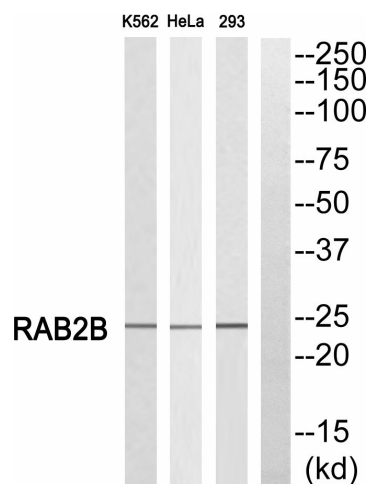
Product data:

Product Type:	Primary Antibodies
Applications:	ELISA, WB
Recommended Dilution:	WB: 1/500-1/2000 ELISA: 1/10000
Reactivity:	Human, Mouse, Rat
Host:	Rabbit
Isotype:	IgG
Clonality:	Polyclonal
Immunogen:	The antiserum was produced against synthesized peptide derived from human RAB2B. AA range:103-152
Formulation:	Liquid in PBS containing 50% glycerol, 0.5% BSA and 0.02% sodium azide, pH 7.3.
Concentration:	lot specific
Purification:	Affinity Chromatography
Conjugation:	Unconjugated
Storage:	Store at 4°C short term. Aliquot and store at -20°C long term. Avoid freeze/thaw cycles.
Stability:	1 year
Predicted Protein Size:	Observed MW (kDa):24
Database Link:	Q8WUD1
Background:	Swiss-Prot Acc.Q8WUD1.Required for protein transport from the endoplasmic reticulum to the Golgi complex.

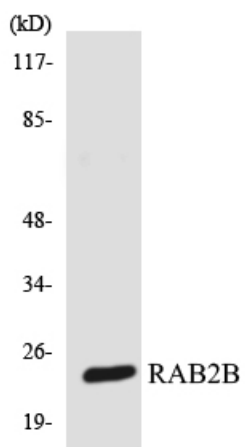


[View online »](#)

Product images:



Western blot analysis of Rab2B in K562, HeLa, 293 lysates using RAB2B antibody. The lane on the right is blocked with the RAB2B peptide.



Western blot analysis of Rab2B in 293 lysates using RAB2B antibody.