

## Product datasheet for **TA385102S**

### **RAB22A Rabbit Monoclonal Antibody [Clone ID: R07-3A8]**

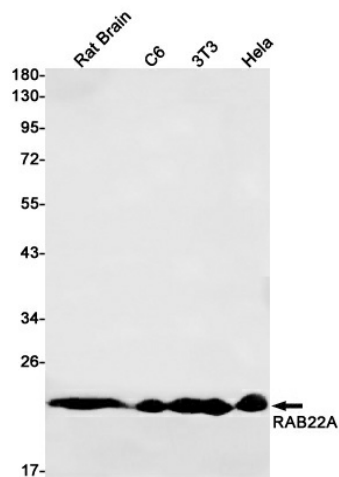
#### **Product data:**

<b>Product Type:</b>	Primary Antibodies
<b>Clone Name:</b>	R07-3A8
<b>Applications:</b>	IP, WB
<b>Recommended Dilution:</b>	WB: 1/1000 IP: 1/20
<b>Reactivity:</b>	Human, Mouse, Rat
<b>Host:</b>	Rabbit
<b>Isotype:</b>	IgG
<b>Clonality:</b>	Monoclonal
<b>Immunogen:</b>	A synthetic peptide of human RAB22A
<b>Formulation:</b>	50mM Tris-Glycine(pH 7.4), 0.15M NaCl, 40% Glycerol, 0.01% Sodium azide and 0.05% BSA
<b>Concentration:</b>	lot specific
<b>Purification:</b>	Affinity Purified
<b>Conjugation:</b>	Unconjugated
<b>Storage:</b>	Store at 4°C short term. Aliquot and store at -20°C long term. Avoid freeze/thaw cycles.
<b>Stability:</b>	1 year
<b>Predicted Protein Size:</b>	Calculated MW: 22 kDa; Observed MW: 22 kDa
<b>Gene Name:</b>	RAB22A, member RAS oncogene family
<b>Database Link:</b>	<a href="#">Entrez Gene 57403 Human Q9UL26</a>
<b>Background:</b>	Swiss-Prot Acc.Q9UL26.Plays a role in endocytosis and intracellular protein transport. Mediates trafficking of TF from early endosomes to recycling endosomes (PubMed:16537905). Required for NGF-mediated endocytosis of NTRK1, and subsequent neurite outgrowth (PubMed:21849477). Binds GTP and GDP and has low GTPase activity. Alternates between a GTP-bound active form and a GDP-bound inactive form (PubMed:16537905).
<b>Synonyms:</b>	MGC16770; Rab-22; RAB22



[View online »](#)

## Product images:



Western blot analysis of RAB22A in rat Brain, C6, 3T3, HeLa lysates using Rab22A antibody.