

Product datasheet for **TA385102M**

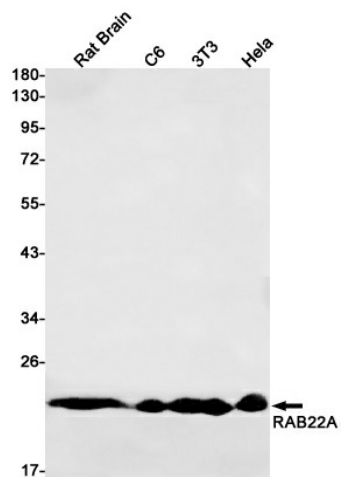
RAB22A Rabbit Monoclonal Antibody [Clone ID: R07-3A8]

Product data:

Product Type:	Primary Antibodies
Clone Name:	R07-3A8
Applications:	IP, WB
Recommended Dilution:	WB: 1/1000 IP: 1/20
Reactivity:	Human, Mouse, Rat
Host:	Rabbit
Isotype:	IgG
Clonality:	Monoclonal
Immunogen:	A synthetic peptide of human RAB22A
Formulation:	50mM Tris-Glycine(pH 7.4), 0.15M NaCl, 40% Glycerol, 0.01% Sodium azide and 0.05% BSA
Concentration:	lot specific
Purification:	Affinity Purified
Conjugation:	Unconjugated
Storage:	Store at 4°C short term. Aliquot and store at -20°C long term. Avoid freeze/thaw cycles.
Stability:	1 year
Predicted Protein Size:	Calculated MW: 22 kDa; Observed MW: 22 kDa
Gene Name:	RAB22A, member RAS oncogene family
Database Link:	Entrez Gene 57403 Human Q9UL26
Background:	Swiss-Prot Acc.Q9UL26.Plays a role in endocytosis and intracellular protein transport. Mediates trafficking of TF from early endosomes to recycling endosomes (PubMed:16537905). Required for NGF-mediated endocytosis of NTRK1, and subsequent neurite outgrowth (PubMed:21849477). Binds GTP and GDP and has low GTPase activity. Alternates between a GTP-bound active form and a GDP-bound inactive form (PubMed:16537905).
Synonyms:	MGC16770; Rab-22; RAB22

[View online »](#)

Product images:



Western blot analysis of RAB22A in rat Brain, C6, 3T3, HeLa lysates using Rab22A antibody.