

## Product datasheet for **TA385099M**

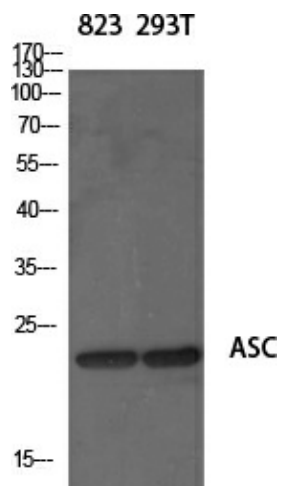
### **TMS1 (PYCARD) Rabbit Polyclonal Antibody**

#### **Product data:**

Product Type:	Primary Antibodies
Applications:	ELISA, IF, IHC, WB
Recommended Dilution:	WB: 1/500-1/2000 IHC: 1/100-1/300 IF: 1/200-1/1000 ELISA: 1/40000
Reactivity:	Human, Mouse, Rat
Host:	Rabbit
Isotype:	IgG
Clonality:	Polyclonal
Immunogen:	The antiserum was produced against synthesized peptide derived from human ASC. AA range:10-59
Formulation:	Liquid in PBS containing 50% glycerol, 0.5% BSA and 0.02% sodium azide, pH 7.3.
Concentration:	lot specific
Purification:	Affinity Purified
Conjugation:	Unconjugated
Storage:	Store at 4°C short term. Aliquot and store at -20°C long term. Avoid freeze/thaw cycles.
Stability:	1 year
Predicted Protein Size:	Observed MW (kDa):21
Gene Name:	PYD and CARD domain containing
Database Link:	<a href="#">Entrez Gene 29108 Human Q9ULZ3</a>
Background:	Swiss-Prot Acc.Q9ULZ3.
Synonyms:	ASC; CARD5; hASC; MGC10332; TMS; TMS-1; TMS1



[View online »](#)

**Product images:**

Western blot analysis of ASC in various lysates using ASC antibody.