

## Product datasheet for **TA385098**

### Poliovirus Receptor (PVR) Rabbit Polyclonal Antibody

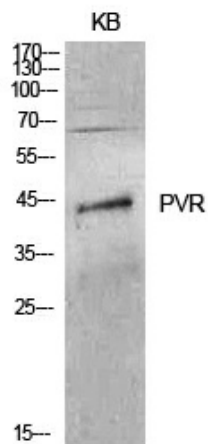
#### Product data:

Product Type:	Primary Antibodies
Applications:	ELISA, WB
Recommended Dilution:	WB: 1/500-1/2000 ELISA: 1/10000
Reactivity:	Human, Mouse, Rat
Host:	Rabbit
Isotype:	IgG
Clonality:	Polyclonal
Immunogen:	The antiserum was produced against synthesized peptide derived from the Internal region of human PVR. AA range:81-130
Formulation:	Liquid in PBS containing 50% glycerol, 0.5% BSA and 0.02% sodium azide, pH 7.3.
Concentration:	lot specific
Purification:	Affinity Purified
Conjugation:	Unconjugated
Storage:	Store at 4°C short term. Aliquot and store at -20°C long term. Avoid freeze/thaw cycles.
Stability:	1 year
Predicted Protein Size:	Observed MW (kDa):45
Gene Name:	poliovirus receptor
Database Link:	<a href="#">Entrez Gene 5817 Human P15151</a>
Background:	Swiss-Prot Acc.P15151.
Synonyms:	CD155; FLJ25946; HVED; Necl-5; NECL5; PVS; Tage4

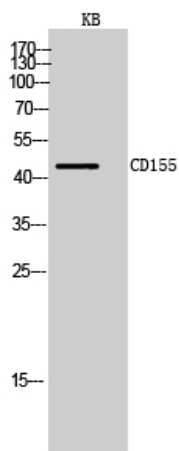


[View online »](#)

Product images:



Western blot analysis of CD155 in KB lysates using CD155 antibody.



Western blot analysis of CD155 in KB lysates using CD155 antibody.