

## Product datasheet for **TA385096S**

### Securin (PTTG1) Rabbit Monoclonal Antibody [Clone ID: R09-6J7]

#### Product data:

Product Type:	Primary Antibodies
Clone Name:	R09-6J7
Applications:	IHC, IP, WB
Recommended Dilution:	WB: 1/1000-1/5000 IHC: 1/20 IP: 1/20
Reactivity:	Human, Mouse
Host:	Rabbit
Isotype:	IgG
Clonality:	Monoclonal
Immunogen:	A synthetic peptide of human Securin
Formulation:	50mM Tris-Glycine(pH 7.4), 0.15M NaCl, 40% Glycerol, 0.01% Sodium azide and 0.05% BSA
Concentration:	lot specific
Purification:	Affinity Purified
Conjugation:	Unconjugated
Storage:	Store at 4°C short term. Aliquot and store at -20°C long term. Avoid freeze/thaw cycles.
Stability:	1 year
Predicted Protein Size:	Calculated MW: 22 kDa; Observed MW: 25 kDa
Gene Name:	pituitary tumor-transforming 1
Database Link:	<a href="#">Entrez Gene 9232 Human O95997</a>



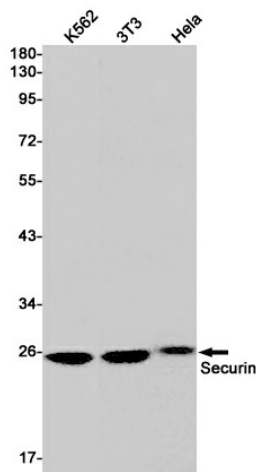
[View online »](#)

**Background:**

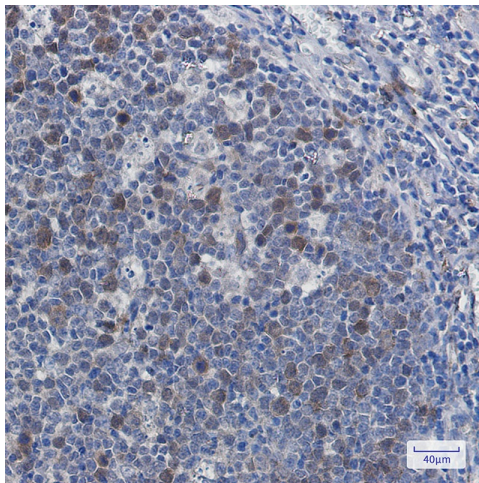
Swiss-Prot Acc.O95997.Regulatory protein, which plays a central role in chromosome stability, in the p53/TP53 pathway, and DNA repair. Probably acts by blocking the action of key proteins. During the mitosis, it blocks Separase/ESPL1 function, preventing the proteolysis of the cohesin complex and the subsequent segregation of the chromosomes. At the onset of anaphase, it is ubiquitinated, conducting to its destruction and to the liberation of ESPL1. Its function is however not limited to a blocking activity, since it is required to activate ESPL1. Negatively regulates the transcriptional activity and related apoptosis activity of TP53. The negative regulation of TP53 may explain the strong transforming capability of the protein when it is overexpressed. May also play a role in DNA repair via its interaction with Ku, possibly by connecting DNA damage-response pathways with sister chromatid separation.

**Synonyms:**

EAP1; HPTTG; MGC126883; MGC138276; OTTHUMP00000160845; PTTG; securin; TUTR1

**Product images:**

Western blot analysis of Securin in K562, 3T3, HeLa lysates using Securin antibody.



Immunohistochemistry analysis of paraffin-embedded Human tonsil using Securin antibody. High-pressure and temperature Sodium Citrate pH 6.0 was used for antigen retrieval.