

## Product datasheet for **TA385094**

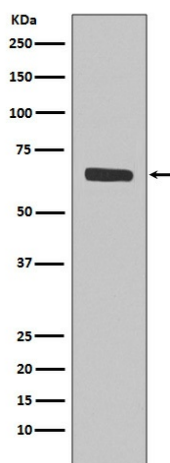
### **SHP1 (PTPN6) Rabbit Polyclonal Antibody**

#### **Product data:**

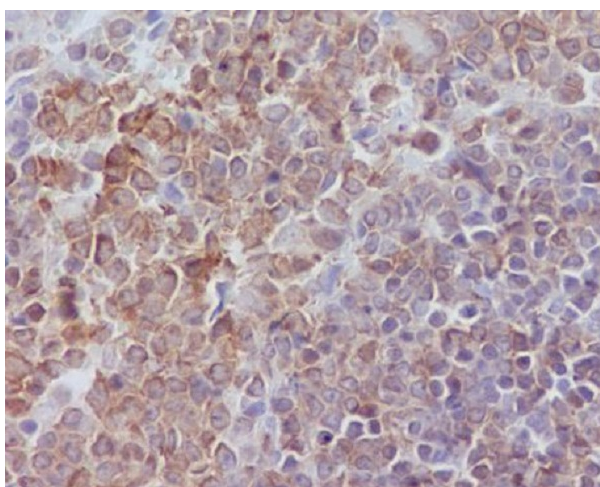
<b>Product Type:</b>	Primary Antibodies
<b>Applications:</b>	IHC, WB
<b>Recommended Dilution:</b>	WB: 1/500-1/2000 IHC: 1/50-1/200
<b>Reactivity:</b>	Human, Mouse, Rat
<b>Host:</b>	Rabbit
<b>Isotype:</b>	IgG
<b>Clonality:</b>	Polyclonal
<b>Immunogen:</b>	A synthesized peptide derived from human SHP1
<b>Formulation:</b>	Rabbit IgG in phosphate buffered saline , pH 7.4, 150mM NaCl, 0.02% sodium azide and 50% glycerol.
<b>Concentration:</b>	lot specific
<b>Purification:</b>	Affinity Chromatography
<b>Conjugation:</b>	Unconjugated
<b>Storage:</b>	Store at 4°C short term. Aliquot and store at -20°C long term. Avoid freeze/thaw cycles.
<b>Stability:</b>	1 year
<b>Predicted Protein Size:</b>	68kDa
<b>Gene Name:</b>	protein tyrosine phosphatase, non-receptor type 6
<b>Database Link:</b>	<a href="#">Entrez Gene 5777 Human P29350</a>
<b>Background:</b>	Swiss-Prot Acc.P29350.The protein encoded by this gene is a member of the protein tyrosine phosphatase (PTP) family. PTPs are known to be signaling molecules that regulate a variety of cellular processes including cell growth, differentiation, mitotic cycle, and oncogenic transformation.
<b>Synonyms:</b>	HCP; HCPH; HPTP1C; PTP-1C; PTP1C; SH-PTP1; SHP-1; SHP-1L; SHP1



[View online »](#)

**Product images:**

Western blot analysis of SHP1 in Jurkat lysates using SHP1 antibody.



Immunohistochemistry analysis of paraffin-embedded rat spleen using SHP1 antibody. High-pressure and temperature Sodium Citrate pH 6.0 was used for antigen retrieval.