

Product datasheet for **TA385093**

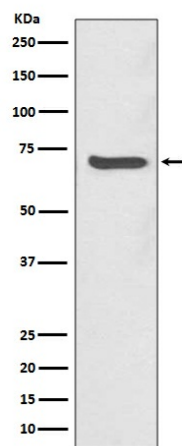
SHP2 (PTPN11) Rabbit Polyclonal Antibody

Product data:

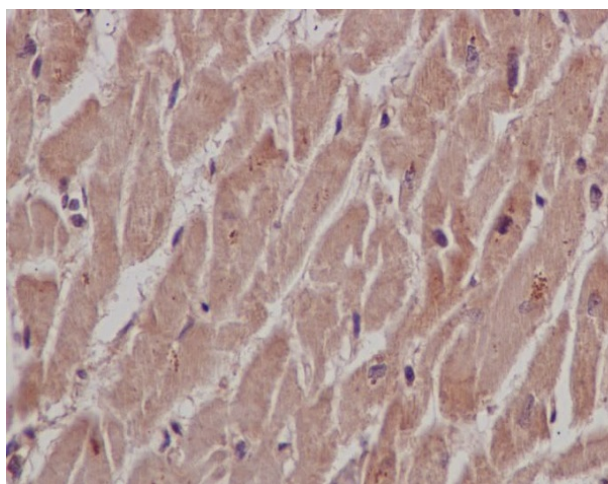
Product Type:	Primary Antibodies
Applications:	IF, IHC, IP, WB
Recommended Dilution:	WB: 1/1000-1/2000 IHC: 1/50-1/200 ICC/IF: 1/50-1/200 IP: 1/50
Reactivity:	Human
Host:	Rabbit
Isotype:	IgG
Clonality:	Polyclonal
Immunogen:	A synthesized peptide derived from human SHP2
Formulation:	Rabbit IgG in phosphate buffered saline , pH 7.4, 150mM NaCl, 0.02% sodium azide and 50% glycerol.
Concentration:	lot specific
Purification:	Affinity Chromatography
Conjugation:	Unconjugated
Storage:	Store at 4°C short term. Aliquot and store at -20°C long term. Avoid freeze/thaw cycles.
Stability:	1 year
Predicted Protein Size:	70kDa
Gene Name:	protein tyrosine phosphatase, non-receptor type 11
Database Link:	Entrez Gene 5781 Human Q06124
Background:	Swiss-Prot Acc.Q06124.Belongs to the protein-tyrosine phosphatase family. Non-receptor class 2 subfamily. It participates in signaling events downstream of receptors for growth factors, cytokines, hormones, antigens, and extracellular matrices in the control of cell growth, differentiation, migration, and death.
Synonyms:	BPTP3; CFC; MGC14433; NS1; PTP-1D; PTP-2C; PTP2C; SH-PTP2; SH-PTP3; SHP-2; SHP2; SHPTP2



[View online »](#)

Product images:

Western blot analysis of SHP2 in Jurkat lysates using SHP2 antibody.



Immunohistochemistry analysis of paraffin-embedded Human heart using SHP2 antibody. High-pressure and temperature Sodium Citrate pH 6.0 was used for antigen retrieval.