

## Product datasheet for **TA385083**

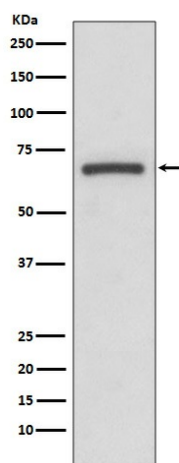
### PTGS1 Rabbit Polyclonal Antibody

#### Product data:

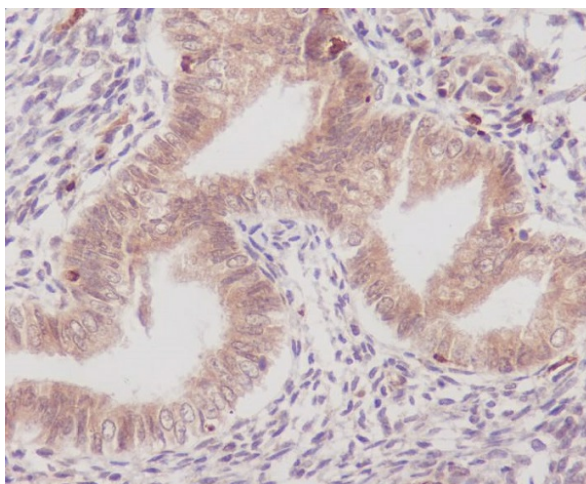
Product Type:	Primary Antibodies
Applications:	FC, IF, IHC, IP, WB
Recommended Dilution:	WB: 1/1000-1/2000 IHC: 1/50-1/200 ICC/IF: 1/50-1/200 IP: 1/50 FC: 1/50
Reactivity:	Human, Mouse, Rat
Host:	Rabbit
Isotype:	IgG
Clonality:	Polyclonal
Immunogen:	A synthesized peptide derived from human COX1
Formulation:	Rabbit IgG in phosphate buffered saline , pH 7.4, 150mM NaCl, 0.02% sodium azide and 50% glycerol.
Concentration:	lot specific
Purification:	Affinity Chromatography
Conjugation:	Unconjugated
Storage:	Store at 4°C short term. Aliquot and store at -20°C long term. Avoid freeze/thaw cycles.
Stability:	1 year
Predicted Protein Size:	70kDa
Gene Name:	prostaglandin-endoperoxide synthase 1
Database Link:	<a href="#">Entrez Gene 5742 Human P23219</a>
Background:	Swiss-Prot Acc.P23219.Cyclooxygenase-1 May play an important role in regulating or promoting cell proliferation in some normal and neoplastically transformed cells. Belongs to the prostaglandin G/H synthase family. Homodimer. 2 isoforms of the human protein are produced by alternative splicing.
Synonyms:	COX-1; COX1; COX3; Cyclooxygenase-1; PCOX1; PGG/HS; PGHS-1; PGHS1; PHS1; PTGHS



[View online »](#)

**Product images:**

Western blot analysis of COX1 in A431 lysates using Cyclooxygenase 1 antibody.



Immunohistochemistry analysis of paraffin-embedded Human uterus using COX1 antibody. High-pressure and temperature Sodium Citrate pH 6.0 was used for antigen retrieval.