

## Product datasheet for **TA385082**

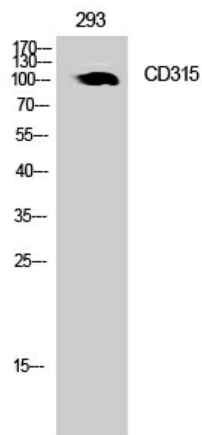
### PTGFRN Rabbit Polyclonal Antibody

#### Product data:

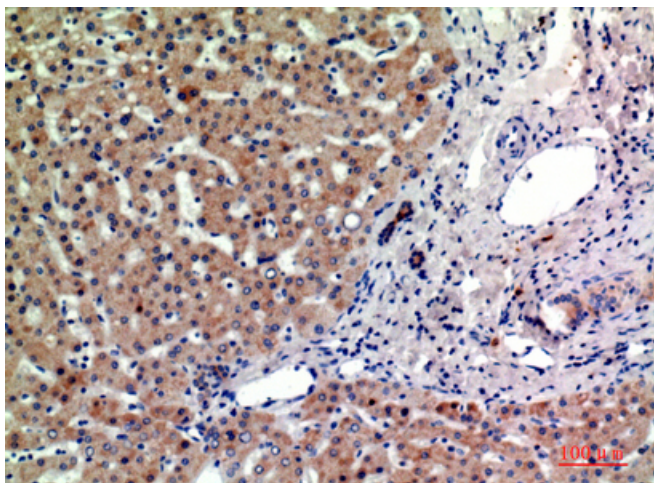
|                         |   |
|-------------------------|---|
| Product Type:           | Primary Antibodies  |
| Applications:           | ELISA, IHC, WB  |
| Recommended Dilution:   | WB: 1/500-1/2000<br>IHC-p: 1/100-1/300<br>ELISA: 1/10000  |
| Reactivity:             | Human, Mouse, Rat   |
| Host:                   | Rabbit  |
| Isotype:                | IgG   |
| Clonality:              | Polyclonal  |
| Immunogen:              | The antiserum was produced against synthesized peptide derived from the Internal region of human PTGFRN. AA range:601-650 |
| Formulation:            | Liquid in PBS containing 50% glycerol, 0.5% BSA and 0.02% sodium azide, pH 7.3.   |
| Concentration:          | lot specific  |
| Purification:           | Affinity Purified   |
| Conjugation:            | Unconjugated  |
| Storage:                | Store at 4°C short term. Aliquot and store at -20°C long term. Avoid freeze/thaw cycles.                                  |
| Stability:              | 1 year  |
| Predicted Protein Size: | Observed MW (kDa):98  |
| Database Link:          | <a href="#">Q9P2B2</a>  |
| Background:             | Swiss-Prot Acc.Q9P2B2.  |



[View online »](#)

**Product images:**

Western blot analysis of CD315 in 293 lysates using CD315 antibody.



Immunohistochemistry analysis of paraffin-embedded Human liver using CD315 antibody. High-pressure and temperature Sodium Citrate pH 6.0 was used for antigen retrieval.