

Product datasheet for **TA385081**

p23 (PTGES3) Rabbit Polyclonal Antibody

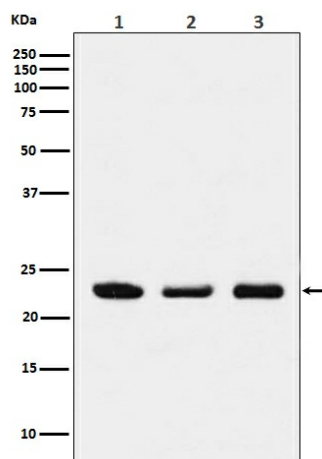
Product data:

Product Type:	Primary Antibodies
Applications:	IF, IP, WB
Recommended Dilution:	WB: 1/1000-1/5000 ICC/IF: 1/50-1/200 IP: 1/50
Reactivity:	Human, Mouse, Rat
Host:	Rabbit
Isotype:	IgG
Clonality:	Polyclonal
Immunogen:	A synthesized peptide derived from human p23
Formulation:	Rabbit IgG in phosphate buffered saline , pH 7.4, 150mM NaCl, 0.02% sodium azide and 50% glycerol.
Concentration:	lot specific
Purification:	Affinity Chromatography
Conjugation:	Unconjugated
Storage:	Store at 4°C short term. Aliquot and store at -20°C long term. Avoid freeze/thaw cycles.
Stability:	1 year
Predicted Protein Size:	23kDa
Gene Name:	prostaglandin E synthase 3
Database Link:	Entrez Gene 10728 Human Q15185
Background:	Swiss-Prot Acc.Q15185.Molecular chaperone that localizes to genomic response elements in a hormone-dependent manner and disrupts receptor-mediated transcriptional activation, by promoting disassembly of transcriptional regulatory complexes.
Synonyms:	cPGES; p23; TEBP



[View online »](#)

Product images:



Western blot analysis of p23 in (1) HeLa lysates; (2) NIH/3T3 lysates; (3) PC-12 lysates using p23 antibody.