

## Product datasheet for **TA385080M**

### Prostaglandin D Synthase (PTGDS) Rabbit Monoclonal Antibody [Clone ID: R06-1C5]

#### Product data:

Product Type:	Primary Antibodies
Clone Name:	R06-1C5
Applications:	IF, IHC, WB
Recommended Dilution:	WB: 1/1000 IHC: 1/20 ICC/IF: 1/20
Reactivity:	Human, Mouse, Rat
Host:	Rabbit
Isotype:	IgG
Clonality:	Monoclonal
Immunogen:	A synthetic peptide of human Prostaglandin D Synthase
Formulation:	50mM Tris-Glycine(pH 7.4), 0.15M NaCl, 40% Glycerol, 0.01% Sodium azide and 0.05% BSA
Concentration:	lot specific
Purification:	Affinity Purified
Conjugation:	Unconjugated
Storage:	Store at 4°C short term. Aliquot and store at -20°C long term. Avoid freeze/thaw cycles.
Stability:	1 year
Predicted Protein Size:	Calculated MW: 21 kDa; Observed MW: 26 kDa
Gene Name:	prostaglandin D2 synthase
Database Link:	<a href="#">Entrez Gene 5730 Human P41222</a>



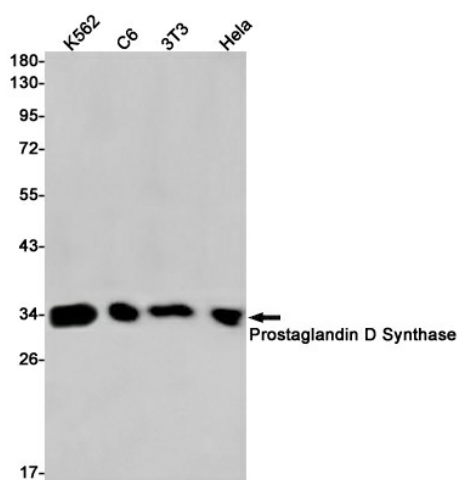
[View online »](#)

**Background:**

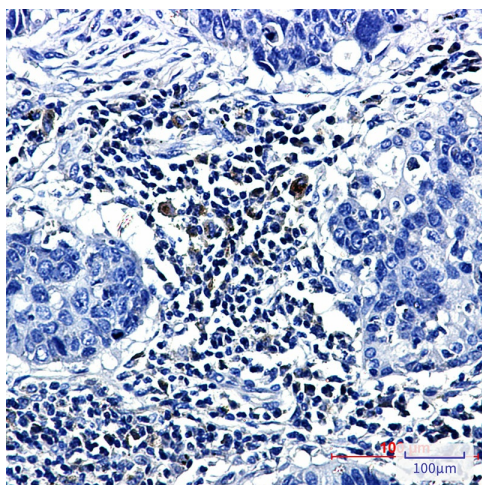
Swiss-Prot Acc.P41222.Catalyzes the conversion of PGH<sub>2</sub> to PGD<sub>2</sub>, a prostaglandin involved in smooth muscle contraction/relaxation and a potent inhibitor of platelet aggregation. Involved in a variety of CNS functions, such as sedation, NREM sleep and PGE<sub>2</sub>-induced allodynia, and may have an anti-apoptotic role in oligodendrocytes. Binds small non-substrate lipophilic molecules, including biliverdin, bilirubin, retinal, retinoic acid and thyroid hormone, and may act as a scavenger for harmful hydrophobic molecules and as a secretory retinoid and thyroid hormone transporter. Possibly involved in development and maintenance of the blood-brain, blood-retina, blood-aqueous humor and blood-Tis barrier. It is likely to play important roles in both maturation and maintenance of the central nervous system and male reproductive system.

**Synonyms:**

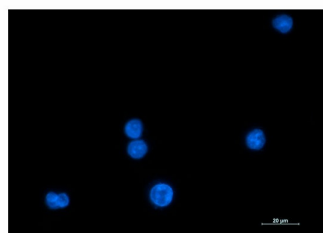
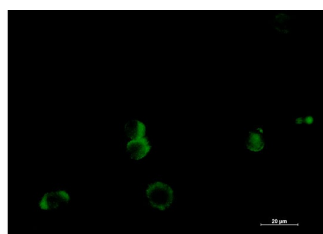
Cerebrin-28; L-PGDS; LPGDS; PDS; PGD<sub>2</sub>; PGDS; PGDS2

**Product images:**


Western blot analysis of Prostaglandin D Synthase in K562, C6, 3T3, HeLa lysates using Prostaglandin D Synthase antibody.



Immunohistochemistry analysis of paraffin-embedded Human lung cancer tissue using Prostaglandin D Synthase antibody. High-pressure and temperature Sodium Citrate pH 6.0 was used for antigen retrieval.



Immunocytochemistry analysis of Prostaglandin D Synthase (green) in K562 using Prostaglandin D Synthase antibody, and DAPI (blue).