

## Product datasheet for **TA385077S**

### PTEN Rabbit Polyclonal Antibody

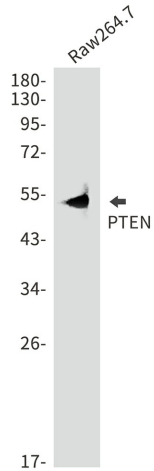
#### Product data:

Product Type:	Primary Antibodies
Applications:	WB
Recommended Dilution:	WB: 1/2000
Reactivity:	Human
Host:	Rabbit
Isotype:	IgG
Clonality:	Polyclonal
Immunogen:	Recombinant protein of human PTEN
Formulation:	50mM Tris-Glycine(pH 7.4), 0.15M NaCl, 40% Glycerol, 0.01% Sodium azide and 0.05% BSA
Concentration:	lot specific
Purification:	Affinity Purified
Conjugation:	Unconjugated
Storage:	Store at 4°C short term. Aliquot and store at -20°C long term. Avoid freeze/thaw cycles.
Stability:	1 year
Predicted Protein Size:	Calculated MW: 47 kDa; Observed MW: 54 kDa
Gene Name:	phosphatase and tensin homolog
Database Link:	<a href="#">Entrez Gene 5728 Human P60484</a>
Background:	Swiss-Prot Acc.P60484.
Synonyms:	10q23del; BZS; MGC11227; MHAM; MMAC1; PTEN1; TEP1

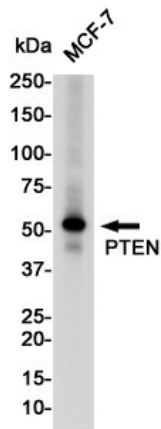


[View online »](#)

Product images:



Western blot analysis of PTEN in Raw264.7 lysates using PTEN antibody.



Western blot analysis of PTEN in MCF-7 lysates using PTEN antibody.