

## Product datasheet for **TA385074M**

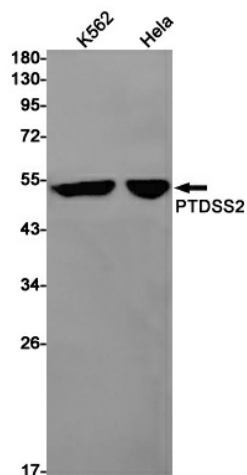
### PTDSS2 Rabbit Monoclonal Antibody [Clone ID: R07-9G9]

#### Product data:

Product Type:	Primary Antibodies
Clone Name:	R07-9G9
Applications:	IP, WB
Recommended Dilution:	WB: 1/1000-1/2000 IP: 1/20
Reactivity:	Human
Host:	Rabbit
Isotype:	IgG
Clonality:	Monoclonal
Immunogen:	Recombinant protein of human PTDSS2
Formulation:	50mM Tris-Glycine(pH 7.4), 0.15M NaCl, 40% Glycerol, 0.01% Sodium azide and 0.05% BSA
Concentration:	lot specific
Purification:	Affinity Purified
Conjugation:	Unconjugated
Storage:	Store at 4°C short term. Aliquot and store at -20°C long term. Avoid freeze/thaw cycles.
Stability:	1 year
Predicted Protein Size:	Calculated MW: 56 kDa; Observed MW: 56 kDa
Gene Name:	phosphatidylserine synthase 2
Database Link:	<a href="#">Entrez Gene 81490 Human Q9BVG9</a>
Background:	Swiss-Prot Acc.Q9BVG9.Catalyzes a base-exchange reaction in which the polar head group of phosphatidylethanolamine (PE) or phosphatidylcholine (PC) is replaced by L-serine. PTDSS2 is specific for phosphatidylethanolamine and does not act on phosphatidylcholine.
Synonyms:	FLJ46373; PSS-2; PSS2


[View online »](#)

## Product images:



Western blot analysis of PTDSS2 in K562, HeLa lysates using PSS2 antibody.