

Product datasheet for **TA385073**

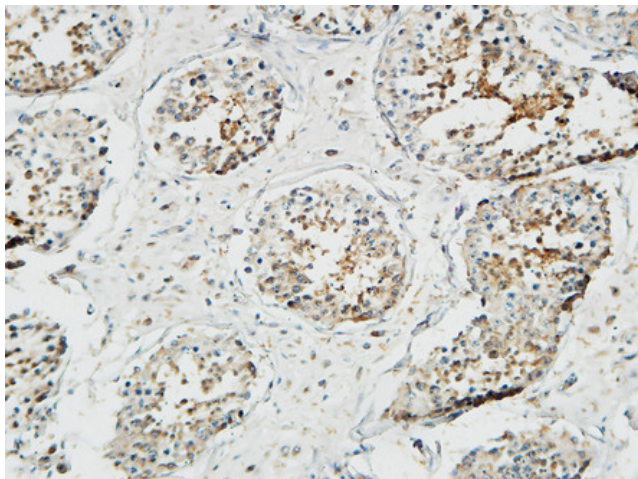
PTCH1 Rabbit Polyclonal Antibody

Product data:

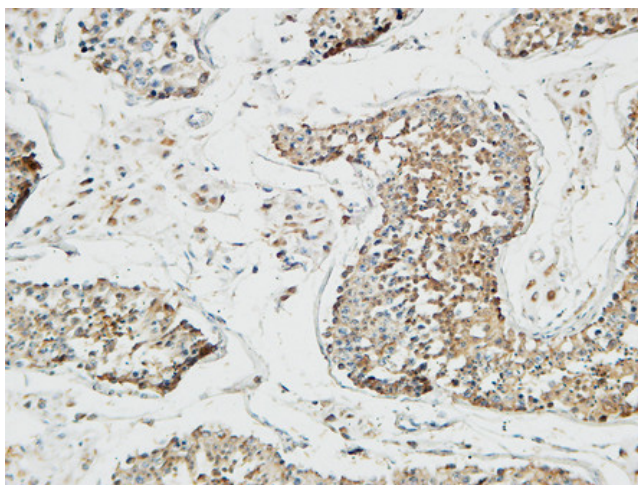
Product Type:	Primary Antibodies
Applications:	ELISA, IHC, WB
Recommended Dilution:	WB: 1/500-1/2000 IHC: 1/100-1/300 ELISA: 1/10000
Reactivity:	Human, Mouse
Host:	Rabbit
Isotype:	IgG
Clonality:	Polyclonal
Immunogen:	The antiserum was produced against synthesized peptide derived from human Patched. AA range:1-50
Formulation:	Liquid in PBS containing 50% glycerol, 0.5% BSA and 0.02% sodium azide, pH 7.3.
Concentration:	lot specific
Purification:	Affinity Chromatography
Conjugation:	Unconjugated
Storage:	Store at 4°C short term. Aliquot and store at -20°C long term. Avoid freeze/thaw cycles.
Stability:	1 year
Predicted Protein Size:	Observed MW (kDa):160
Gene Name:	patched 1
Database Link:	Entrez Gene 5727 Human Q13635
Background:	Swiss-Prot Acc.Q13635.Acts as a receptor for sonic hedgehog (SHH), indian hedgehog (IHH) and desert hedgehog (DHH). Associates with the smoothed protein (SMO) to transduce the hedgehog's proteins signal. Seems to have a tumor suppressor function, as inactivation of this protein is probably a necessary, if not sufficient step for tumorigenesis.
Synonyms:	BCNS; FLJ26746; FLJ42602; HPE7; NBCCS; OTTHUMP00000021709; OTTHUMP00000021710; patched; PTC; PTC1; PTCH; PTCH11



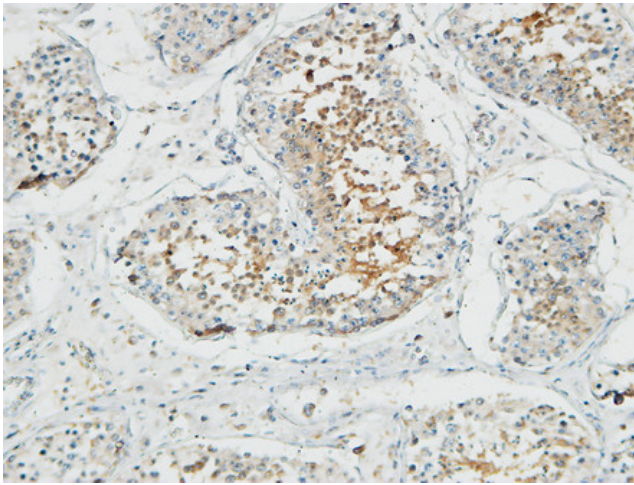
[View online »](#)

Product images:

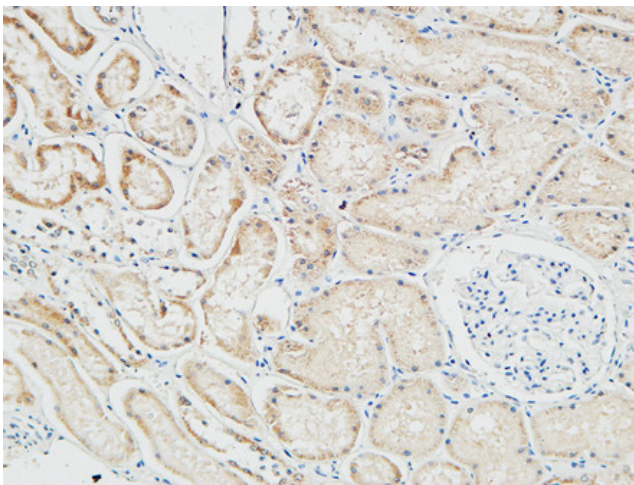
Immunohistochemistry analysis of paraffin-embedded Human testis using PTCH1 antibody. High-pressure and temperature Tris-EDTA pH 8.0 was used for antigen retrieval.



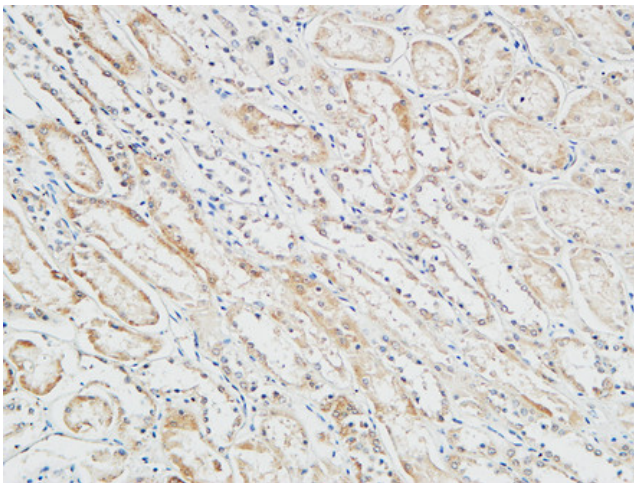
Immunohistochemical analysis of paraffin-embedded Human tonsils using PTCH1 antibody. High-pressure and temperature Tris-EDTA pH 8.0 was used for antigen retrieval.



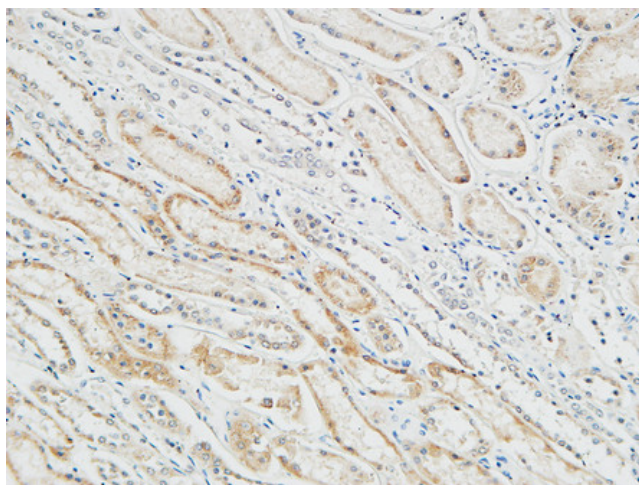
Immunohistochemistry analysis of paraffin-embedded Human testis using PTCH1 antibody. High-pressure and temperature Tris-EDTA pH 8.0 was used for antigen retrieval.



Immunohistochemistry analysis of paraffin-embedded Human Right kidney using PTCH1 antibody. High-pressure and temperature Tris-EDTA pH 8.0 was used for antigen retrieval.



Immunohistochemistry analysis of paraffin-embedded Human Right kidney using PTCH1 antibody. High-pressure and temperature Tris-EDTA pH 8.0 was used for antigen retrieval.



Immunohistochemistry analysis of paraffin-embedded Human Right kidney using PTCH1 antibody. High-pressure and temperature Tris-EDTA pH 8.0 was used for antigen retrieval.