

## Product datasheet for **TA385072**

### PTBP1 Rabbit Polyclonal Antibody

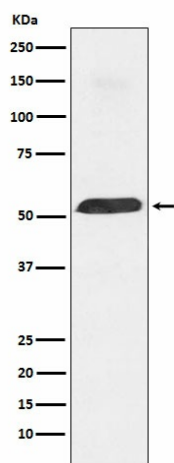
#### Product data:

Product Type:	Primary Antibodies
Applications:	IF, IHC, WB
Recommended Dilution:	WB: 1/1000-1/5000 IHC: 1/50-1/200 ICC/IF: 1/50-1/200
Reactivity:	Human, Mouse, Rat
Host:	Rabbit
Isotype:	IgG
Clonality:	Polyclonal
Immunogen:	A synthesized peptide derived from human PTBP1
Formulation:	Rabbit IgG in phosphate buffered saline , pH 7.4, 150mM NaCl, 0.02% sodium azide and 50% glycerol.
Concentration:	lot specific
Purification:	Affinity Chromatography
Conjugation:	Unconjugated
Storage:	Store at 4°C short term. Aliquot and store at -20°C long term. Avoid freeze/thaw cycles.
Stability:	1 year
Predicted Protein Size:	57kDa
Gene Name:	polypyrimidine tract binding protein 1
Database Link:	<a href="#">Entrez Gene 5725 Human P26599</a>
Background:	Swiss-Prot Acc.P26599.Plays a role in pre-mRNA splicing and in the regulation of alternative splicing events. Binds to the polypyrimidine tract of introns. May promote RNA looping when bound to two separate polypyrimidine tracts in the same pre-mRNA.
Synonyms:	HNRNP-I; HNRNPI; HNRPI; MGC8461; MGC10830; pPTB; PTB; PTB-1; PTB-T; PTB2; PTB3; PTB4



[View online »](#)

## Product images:



Western blot analysis of PTBP1 in Daudi lysates using PTBP1 antibody.