

Product datasheet for **TA385070M**

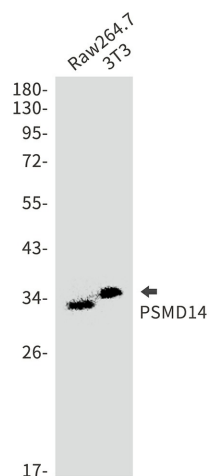
PSMD14 Rabbit Polyclonal Antibody

Product data:

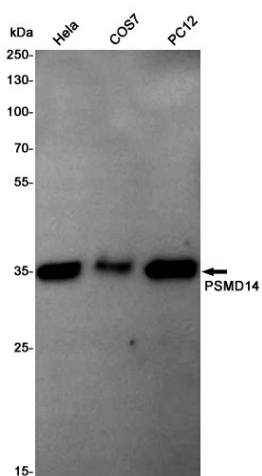
Product Type:	Primary Antibodies
Applications:	IF, IHC, WB
Recommended Dilution:	WB: 1/1000-1/5000 IHC: 1/50-1/200 ICC/IF: 1/50-1/200
Reactivity:	Human, Mouse, Rat, Monkey
Host:	Rabbit
Isotype:	IgG
Clonality:	Polyclonal
Immunogen:	A synthetic peptide of human PSMD14
Formulation:	50mM Tris-Glycine(pH 7.4), 0.15M NaCl, 40% Glycerol, 0.01% Sodium azide and 0.05% BSA
Concentration:	lot specific
Purification:	Affinity Purified
Conjugation:	Unconjugated
Storage:	Store at 4°C short term. Aliquot and store at -20°C long term. Avoid freeze/thaw cycles.
Stability:	1 year
Predicted Protein Size:	Calculated MW: 35 kDa; Observed MW: 35 kDa
Gene Name:	proteasome 26S subunit, non-ATPase 14
Database Link:	Entrez Gene 10213 Human O00487
Background:	Swiss-Prot Acc.O00487.
Synonyms:	PAD1; POH1; RPN11

[View online »](#)

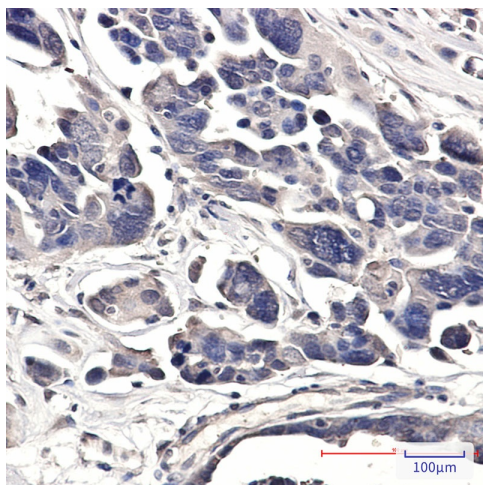
Product images:



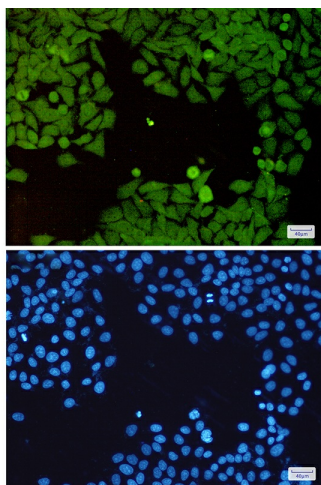
Western blot analysis of PSMD14 in Raw264.7, 3T3 lysates using PSMD14 antibody.



Western blot analysis of PSMD14 in HeLa, COS7, PC-12 lysates using PSMD14 antibody.



Immunohistochemistry analysis of paraffin-embedded Human Cholangiocarcinoma using PSMD14 antibody. High-pressure and temperature Sodium Citrate pH 6.0 was used for antigen retrieval.



Immunocytochemistry analysis of PSMD14 (green) in Hela using PSMD14 antibody, and DAPI (blue)