

## Product datasheet for **TA385069M**

### PSMB8 Rabbit Monoclonal Antibody [Clone ID: R09-1H1]

#### Product data:

Product Type:	Primary Antibodies
Clone Name:	R09-1H1
Applications:	IF, IP, WB
Recommended Dilution:	WB: 1/2000-1/10000 ICC/IF: 1/20 IP: 1/20
Reactivity:	Human, Mouse
Host:	Rabbit
Isotype:	IgG
Clonality:	Monoclonal
Immunogen:	A synthetic peptide of human LMP7
Formulation:	50mM Tris-Glycine(pH 7.4), 0.15M NaCl, 40% Glycerol, 0.01% Sodium azide and 0.05% BSA
Concentration:	lot specific
Purification:	Affinity Purified
Conjugation:	Unconjugated
Storage:	Store at 4°C short term. Aliquot and store at -20°C long term. Avoid freeze/thaw cycles.
Stability:	1 year
Predicted Protein Size:	Calculated MW: 30 kDa; Observed MW: 23 kDa
Gene Name:	proteasome subunit beta 8
Database Link:	<a href="#">Entrez Gene 5696 Human P28062</a>



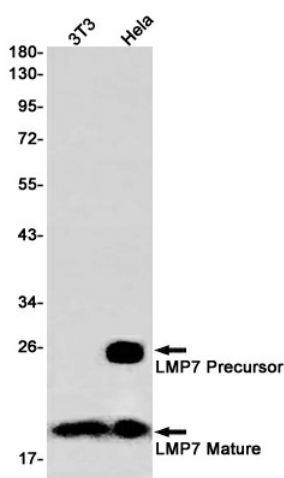
[View online »](#)

**Background:**

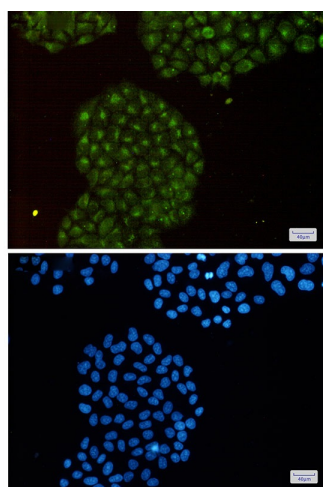
Swiss-Prot Acc.P28062.The proteasome is a multicatalytic proteinase complex which is characterized by its ability to cleave peptides with Arg, Phe, Tyr, Leu, and Glu adjacent to the leaving group at neutral or slightly basic pH. The proteasome has an ATP-dependent proteolytic activity. This subunit is involved in antigen processing to generate class I binding peptides. Replacement of PSMB5 by PSMB8 increases the capacity of the immunoproteasome to cleave model peptides after hydrophobic and basic residues. Acts as a major component of interferon gamma-induced sensitivity. Plays a key role in apoptosis via the degradation of the apoptotic inhibitor MCL1. May be involved in the inflammatory response pathway. In cancer cells, substitution of isoform 1 (E2) by isoform 2 (E1) results in immunoproteasome deficiency. Required for the differentiation of preadipocytes into adipocytes.

**Synonyms:**

beta5i; D6S216; D6S216E; LMP7; MGC1491; PSMB5i; RING10; Y2

**Product images:**


Western blot analysis of LMP7 in 3T3, HeLa lysates using Proteasome beta 8 antibody.



Immunocytochemistry analysis of LMP7(green) in HeLa using LMP7 antibody, and DAPI(blue)