

Product datasheet for **TA385067S**

PSMB8 Mouse Monoclonal Antibody [Clone ID: 3G3-C1-E2]

Product data:

Product Type:	Primary Antibodies
Clone Name:	3G3-C1-E2
Applications:	IF, IHC, WB
Recommended Dilution:	WB: 1/500-1/2000 IHC: 1/200-1/1000 ICC: 1/200-1/1000
Reactivity:	Human, Rat
Host:	Mouse
Isotype:	IgG1
Clonality:	Monoclonal
Immunogen:	Purified recombinant fragment of human PSMB8 expressed in E. Coli.
Formulation:	Liquid in PBS containing 50% glycerol, 0.5% BSA and 0.03% Proclin 300, pH 7.3.
Concentration:	lot specific
Purification:	Ascitic Fluid
Conjugation:	Unconjugated
Storage:	Store at 4°C short term. Aliquot and store at -20°C long term. Avoid freeze/thaw cycles.
Stability:	1 year
Predicted Protein Size:	30kDa
Gene Name:	proteasome subunit beta 8
Database Link:	Entrez Gene 5696 Human P28062



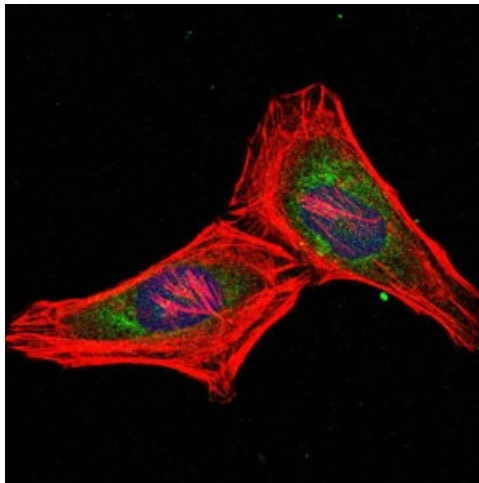
[View online »](#)

Background:

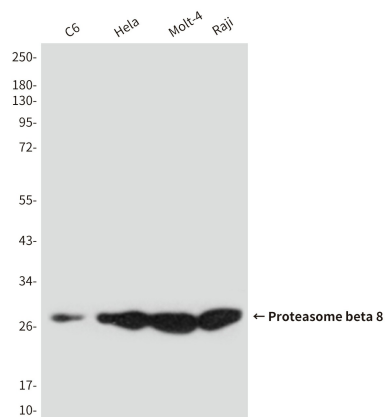
Swiss-Prot Acc.P28062.The proteasome is a multicatalytic proteinase complex with a highly ordered ring-shaped 20S core structure. The core structure is composed of 4 rings of 28 non-identical subunits; 2 rings are composed of 7 alpha subunits and 2 rings are composed of 7 beta subunits. Proteasomes are distributed throughout eukaryotic cells at a high concentration and cleave peptides in an ATP/ubiquitin-dependent process in a non-lysosomal pathway. An essential function of a modified proteasome, the immunoproteasome, is the processing of class I MHC peptides. This gene encodes a member of the proteasome B-type family, also known as the T1B family, that is a 20S core beta subunit. This gene is located in the class II region of the MHC (major histocompatibility complex). Expression of this gene is induced by gamma interferon and this gene product replaces catalytic subunit 3 (proteasome beta 5 subunit) in the immunoproteasome. Proteolytic processing is required to generate a mature subunit. Two alternative transcripts encoding two isoforms have been identified; both isoforms are processed to yield the same mature subunit.

Synonyms:

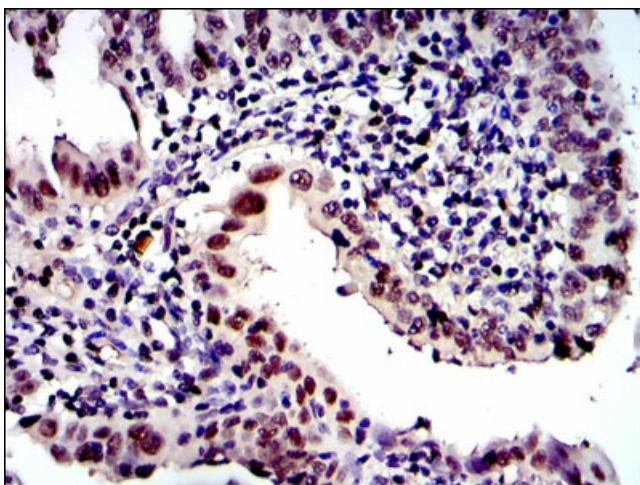
beta5i; D6S216; D6S216E; LMP7; MGC1491; PSMB5i; RING10; Y2

Product images:

Immunofluorescence analysis of HeLa cells using PSMB8 mouse mAb (green). Blue



Western blot analysis of PSMB8/LMP7 in C6, HeLa, Molt4 and Raji lysates using PSMB8/LMP7 antibody.



Immunohistochemical analysis of paraffin-embedded intima cancer tissues using PSMB8 mouse mAb with DAB staining.