

Product datasheet for **TA385066S**

PSMB10 Rabbit Monoclonal Antibody [Clone ID: R08-6I5]

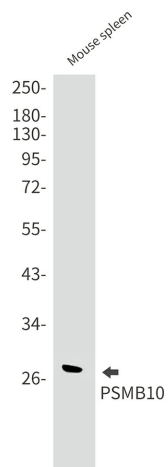
Product data:

Product Type:	Primary Antibodies
Clone Name:	R08-6I5
Applications:	IHC, WB
Recommended Dilution:	WB: 1/1000 IHC: 1/20
Reactivity:	Human, Mouse, Rat
Host:	Rabbit
Isotype:	IgG
Clonality:	Monoclonal
Immunogen:	A synthetic peptide of human PSMB10
Formulation:	50mM Tris-Glycine(pH 7.4), 0.15M NaCl, 40% Glycerol, 0.01% Sodium azide and 0.05% BSA
Concentration:	lot specific
Purification:	Affinity Purified
Conjugation:	Unconjugated
Storage:	Store at 4°C short term. Aliquot and store at -20°C long term. Avoid freeze/thaw cycles.
Stability:	1 year
Predicted Protein Size:	Calculated MW: 29 kDa; Observed MW: 29 kDa
Gene Name:	proteasome subunit beta 10
Database Link:	Entrez Gene 5699 Human P40306
Background:	Swiss-Prot Acc.P40306.The proteasome is a multicatalytic proteinase complex which is characterized by its ability to cleave peptides with Arg, Phe, Tyr, Leu, and Glu adjacent to the leaving group at neutral or slightly basic pH. The proteasome has an ATP-dependent proteolytic activity. This subunit is involved in antigen processing to generate class I binding peptides.
Synonyms:	beta2i; LMP10; MECL1; MGC1665

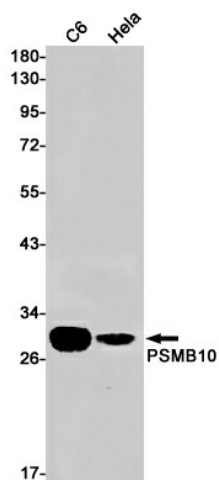


[View online »](#)

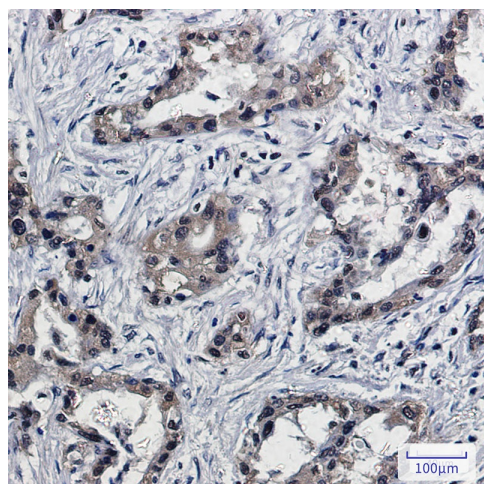
Product images:



Western blot analysis of PSMB10 in mouse spleen lysates using PSMB10 antibody.



Western blot analysis of PSMB10 in C6, HeLa lysates using PSMB10 antibody.



Immunohistochemistry analysis of paraffin-embedded Human lung cancer using PSMB10 antibody. High-pressure and temperature Sodium Citrate pH 6.0 was used for antigen retrieval.

