

Product datasheet for **TA385065S**

Proteasome subunit alpha type 6 (PSMA6) Rabbit Monoclonal Antibody [Clone ID: R01-4I2]

Product data:

Product Type:	Primary Antibodies
Clone Name:	R01-4I2
Applications:	IF, WB
Recommended Dilution:	WB: 1/2000-1/10000 ICC/IF: 1/50-1/100
Reactivity:	Human, Mouse, Rat
Host:	Rabbit
Isotype:	IgG
Clonality:	Monoclonal
Immunogen:	A synthetic peptide of human Proteasome subunit alpha type 6
Formulation:	50mM Tris-Glycine(pH 7.4), 0.15M NaCl, 40% Glycerol, 0.01% Sodium azide and 0.05% BSA
Concentration:	lot specific
Purification:	Affinity Purified
Conjugation:	Unconjugated
Storage:	Store at 4°C short term. Aliquot and store at -20°C long term. Avoid freeze/thaw cycles.
Stability:	1 year
Predicted Protein Size:	Calculated MW: 27 kDa; Observed MW: 27 kDa
Gene Name:	proteasome subunit alpha 6
Database Link:	Entrez Gene 5687 Human P60900



[View online »](#)

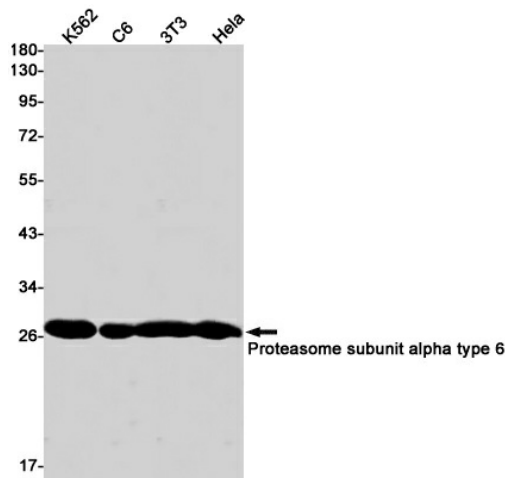
Background:

Swiss-Prot Acc.P60900.Component of the 20S core proteasome complex involved in the proteolytic degradation of most intracellular proteins. This complex plays numerous essential roles within the cell by associating with different regulatory particles. Associated with two 19S regulatory particles, forms the 26S proteasome and thus participates in the ATP-dependent degradation of ubiquitinated proteins. The 26S proteasome plays a key role in the maintenance of protein homeostasis by removing misfolded or damaged proteins that could impair cellular functions, and by removing proteins whose functions are no longer required. Associated with the PA200 or PA28, the 20S proteasome mediates ubiquitin-independent protein degradation. This type of proteolysis is required in several pathways including spermatogenesis (20S-PA200 complex) or generation of a subset of MHC class I-presented antigenic peptides (20S-PA28 complex).

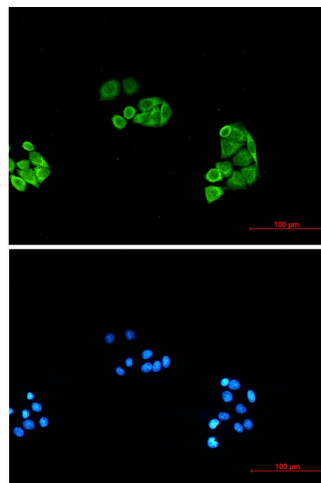
Synonyms:

IOTA; MGC2333; MGC22756; MGC23846; p27K; PROS-27; PROS27

Product images:



Western blot analysis of Proteasome subunit alpha type 6 in K562, C6, 3T3, HeLa lysates using Proteasome alpha 6 antibody.



Immunocytochemistry analysis of Proteasome subunit alpha type 6 (green) in HeLa using Proteasome subunit alpha type 6 antibody, and DAPI (blue)