

## Product datasheet for **TA385063**

### PSMA2 Rabbit Monoclonal Antibody [Clone ID: R09-4H8]

#### Product data:

Product Type:	Primary Antibodies
Clone Name:	R09-4H8
Applications:	IF, IHC, WB
Recommended Dilution:	WB: 1/1000-1/5000 IHC: 1/20 ICC/IF: 1/20
Reactivity:	Human, Mouse, Rat
Host:	Rabbit
Isotype:	IgG
Clonality:	Monoclonal
Immunogen:	A synthetic peptide of human Proteasome 20S alpha 2
Formulation:	50mM Tris-Glycine(pH 7.4), 0.15M NaCl, 40% Glycerol, 0.01% Sodium azide and 0.05% BSA
Concentration:	lot specific
Purification:	Affinity Purified
Conjugation:	Unconjugated
Storage:	Store at 4°C short term. Aliquot and store at -20°C long term. Avoid freeze/thaw cycles.
Stability:	1 year
Predicted Protein Size:	Calculated MW: 26 kDa; Observed MW: 26 kDa
Gene Name:	proteasome subunit alpha 2
Database Link:	<a href="#">Entrez Gene 5683 Human P25787</a>



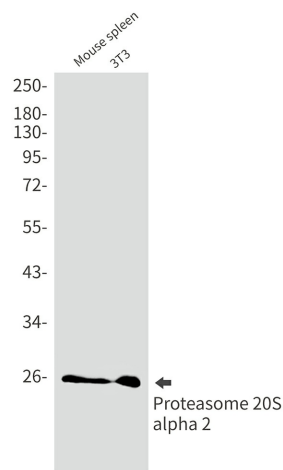
[View online »](#)

**Background:**

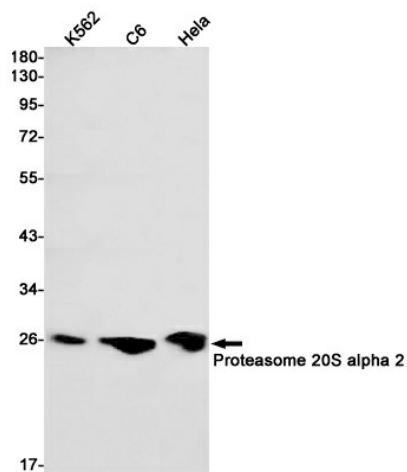
Swiss-Prot Acc.P25787.Component of the 20S core proteasome complex involved in the proteolytic degradation of most intracellular proteins. This complex plays numerous essential roles within the cell by associating with different regulatory particles. Associated with two 19S regulatory particles, forms the 26S proteasome and thus participates in the ATP-dependent degradation of ubiquitinated proteins. The 26S proteasome plays a key role in the maintenance of protein homeostasis by removing misfolded or damaged proteins that could impair cellular functions, and by removing proteins whose functions are no longer required. Associated with the PA200 or PA28, the 20S proteasome mediates ubiquitin-independent protein degradation. This type of proteolysis is required in several pathways including spermatogenesis (20S-PA200 complex) or generation of a subset of MHC class I-presented antigenic peptides (20S-PA28 complex).

**Synonyms:**

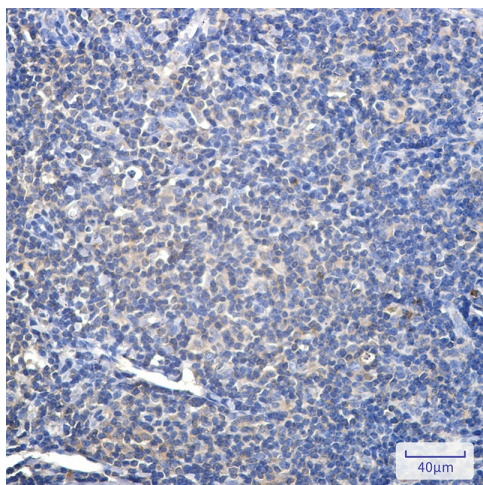
HC3; MU; OTTHUMP00000207364; PMSA2; PSC2; PSC3

**Product images:**

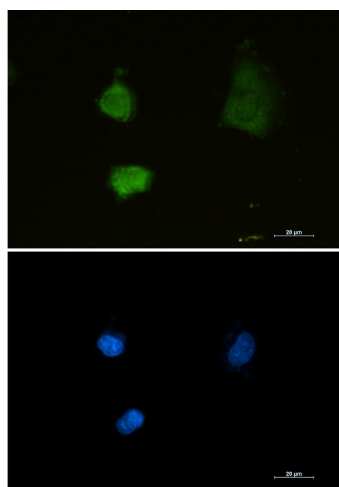
Western blot analysis of Proteasome 20S alpha 2 in mouse spleen, 3T3 lysates using Proteasome 20S alpha 2 antibody.



Western blot analysis of Proteasome 20S alpha 2 in K562, C6, HeLa lysates using Proteasome 20S alpha 2 antibody



Immunohistochemistry analysis of paraffin-embedded Human tonsil using Proteasome 20S alpha 2 antibody. High-pressure and temperature Sodium Citrate pH 6.0 was used for antigen retrieval.



Immunocytochemistry analysis of Proteasome alpha 2 (green) in U87-MG using Proteasome alpha 2 antibody, and DAPI (blue).