

Product datasheet for **TA385062**

PROX1 Rabbit Polyclonal Antibody

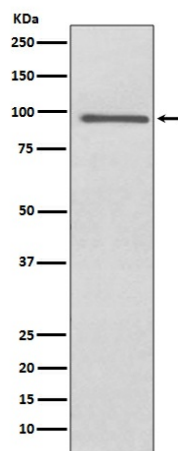
Product data:

Product Type:	Primary Antibodies
Applications:	WB
Recommended Dilution:	WB: 1/500-1/2000
Reactivity:	Human
Host:	Rabbit
Isotype:	IgG
Clonality:	Polyclonal
Immunogen:	A synthesized peptide derived from human PROX1
Formulation:	Rabbit IgG in phosphate buffered saline , pH 7.4, 150mM NaCl, 0.02% sodium azide and 50% glycerol.
Concentration:	lot specific
Purification:	Affinity Chromatography
Conjugation:	Unconjugated
Storage:	Store at 4°C short term. Aliquot and store at -20°C long term. Avoid freeze/thaw cycles.
Stability:	1 year
Predicted Protein Size:	95kDa
Gene Name:	prospero homeobox 1
Database Link:	Entrez Gene 5629 Human Q92786
Background:	Swiss-Prot Acc.Q92786.Plays a critical role in embryonic development and functions as a key regulatory protein in neurogenesis and the development of the heart, eye lens, liver, pancreas and the lymphatic system. Involved in the regulation of the circadian rhythm.
Synonyms:	PROX-1



[View online »](#)

Product images:



Western blot analysis of PROX1 in HepG2 lysates using PROX1 antibody.