

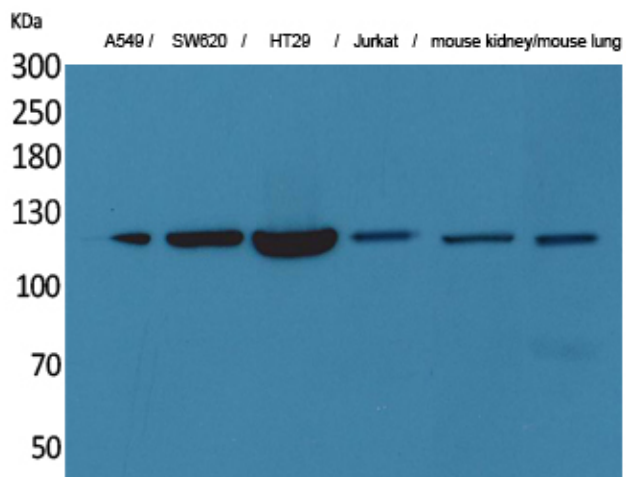
Product datasheet for **TA385061M**

CD133 (PROM1) Rabbit Polyclonal Antibody

Product data:

Product Type:	Primary Antibodies
Applications:	ELISA, IHC, WB
Recommended Dilution:	IHC-p: 1/100-1/300 WB: 1/500-1/2000 ELISA: 1/20000
Reactivity:	Human, Mouse
Host:	Rabbit
Isotype:	IgG
Clonality:	Polyclonal
Immunogen:	The antiserum was produced against synthesized peptide derived from the N-terminal region of human PROM1. AA range:41-90
Formulation:	Liquid in PBS containing 50% glycerol, 0.5% BSA and 0.02% sodium azide, pH 7.3.
Concentration:	lot specific
Purification:	Affinity Purified
Conjugation:	Unconjugated
Storage:	Store at 4°C short term. Aliquot and store at -20°C long term. Avoid freeze/thaw cycles.
Stability:	1 year
Predicted Protein Size:	Observed MW (kDa):100
Gene Name:	prominin 1
Database Link:	Entrez Gene 8842 Human O43490
Background:	Swiss-Prot Acc.O43490.
Synonyms:	AC133; CD133; CORD12; hProminin; MCDR2; MSTP061; PROML1; RP41; STGD4


[View online »](#)

Product images:

Western blot analysis of CD133 in A549, SW620, HT-29, Jurkat, mouse kidney, mouse lung lysates using CD133 antibody.