

Product datasheet for **TA385061**

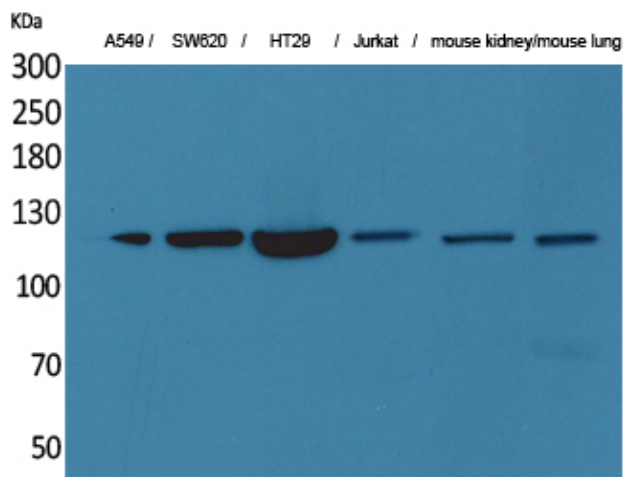
CD133 (PROM1) Rabbit Polyclonal Antibody

Product data:

| | |
|-------------------------|--|
| Product Type: | Primary Antibodies |
| Applications: | ELISA, IHC, WB |
| Recommended Dilution: | IHC-p: 1/100-1/300 WB: 1/500-1/2000 ELISA: 1/20000 |
| Reactivity: | Human, Mouse |
| Host: | Rabbit |
| Isotype: | IgG |
| Clonality: | Polyclonal |
| Immunogen: | The antiserum was produced against synthesized peptide derived from the N-terminal region of human PROM1. AA range:41-90 |
| Formulation: | Liquid in PBS containing 50% glycerol, 0.5% BSA and 0.02% sodium azide, pH 7.3. |
| Concentration: | lot specific |
| Purification: | Affinity Purified |
| Conjugation: | Unconjugated |
| Storage: | Store at 4°C short term. Aliquot and store at -20°C long term. Avoid freeze/thaw cycles. |
| Stability: | 1 year |
| Predicted Protein Size: | Observed MW (kDa):100 |
| Gene Name: | prominin 1 |
| Database Link: | Entrez Gene 8842 Human O43490 |
| Background: | Swiss-Prot Acc.O43490. |
| Synonyms: | AC133; CD133; CORD12; hProminin; MCDR2; MSTP061; PROML1; RP41; STGD4 |



[View online »](#)

Product images:

Western blot analysis of CD133 in A549, SW620, HT-29, Jurkat, mouse kidney, mouse lung lysates using CD133 antibody.