

Product datasheet for **TA385060S**

Prion protein PrP (PRNP) Rabbit Monoclonal Antibody [Clone ID: R03-2E2]

Product data:

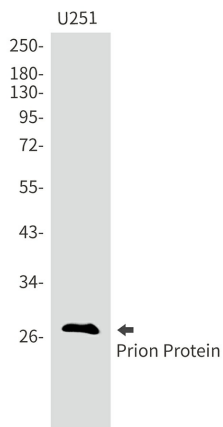
Product Type:	Primary Antibodies
Clone Name:	R03-2E2
Applications:	IHC, WB
Recommended Dilution:	WB: 1/1000-1/5000 IHC: 1/20
Reactivity:	Human, Mouse, Rat
Host:	Rabbit
Isotype:	IgG
Clonality:	Monoclonal
Immunogen:	A synthetic peptide of human Prion protein PrP
Formulation:	50mM Tris-Glycine(pH 7.4), 0.15M NaCl, 40% Glycerol, 0.01% Sodium azide and 0.05% BSA
Concentration:	lot specific
Purification:	Affinity Purified
Conjugation:	Unconjugated
Storage:	Store at 4°C short term. Aliquot and store at -20°C long term. Avoid freeze/thaw cycles.
Stability:	1 year
Predicted Protein Size:	Calculated MW: 28 kDa; Observed MW: 28 kDa
Gene Name:	prion protein
Database Link:	Entrez Gene 5621 Human P04156
Background:	Swiss-Prot Acc.P04156.Its primary physiological function is unclear. May play a role in neuronal development and synaptic plasticity. May be required for neuronal myelin sheath maintenance. May promote myelin homeostasis through acting as an agonist for ADGRG6 receptor. May play a role in iron uptake and iron homeostasis. Soluble oligomers are toxic to cultured neuroblastoma cells and induce apoptosis (in vitro) . Association with GPC1 (via its heparan sulfate chains) targets PRNP to lipid rafts. Also provides Cu ²⁺ or Zn ²⁺ for the ascorbate-mediated GPC1 deaminase degradation of its heparan sulfate side chains .



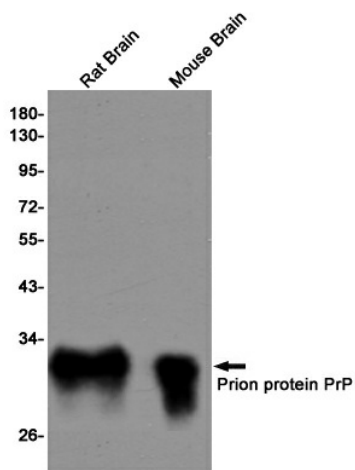
[View online »](#)

Synonyms: AA960666; A1325101; CD230; Prn; Prn-i; Prn-p; PrP; prP27-30; prP33-35C; PrP^{Sc}; PrP^C; PrP^{Sc}; Sinc

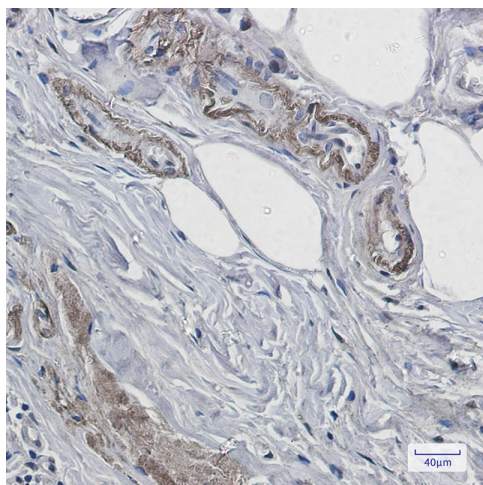
Product images:



Western blot analysis of Prion Protein in U251 lysates using Prion Protein antibody.



Western blot analysis of Prion protein in rat Brain and mouse Brain lysates using Prion Protein antibody.



Immunohistochemistry analysis of paraffin-embedded Human breast cancer using Prion Protein antibody. High-pressure and temperature Sodium Citrate pH 6.0 was used for antigen retrieval.