

Product datasheet for **TA385058S**

PRMT3 Rabbit Monoclonal Antibody [Clone ID: R01-7K2]

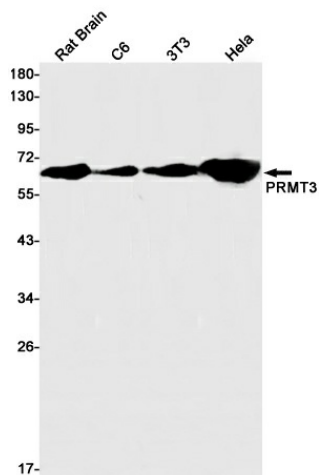
Product data:

Product Type:	Primary Antibodies
Clone Name:	R01-7K2
Applications:	IHC, IP, WB
Recommended Dilution:	WB: 1/2000-1/10000 IHC: 1/20 IP: 1/20
Reactivity:	Human, Mouse, Rat
Host:	Rabbit
Isotype:	IgG
Clonality:	Monoclonal
Immunogen:	A synthetic peptide of human PRMT3
Formulation:	50mM Tris-Glycine(pH 7.4), 0.15M NaCl, 40% Glycerol, 0.01% Sodium azide and 0.05% BSA
Concentration:	lot specific
Purification:	Affinity Purified
Conjugation:	Unconjugated
Storage:	Store at 4°C short term. Aliquot and store at -20°C long term. Avoid freeze/thaw cycles.
Stability:	1 year
Predicted Protein Size:	Calculated MW: 60 kDa; Observed MW: 60 kDa
Gene Name:	protein arginine methyltransferase 3
Database Link:	Entrez Gene 10196 Human O60678
Background:	Swiss-Prot Acc.O60678.Methylates (mono and asymmetric dimethylation) the guanidino nitrogens of arginyl residues in some proteins.
Synonyms:	HRMT1L3

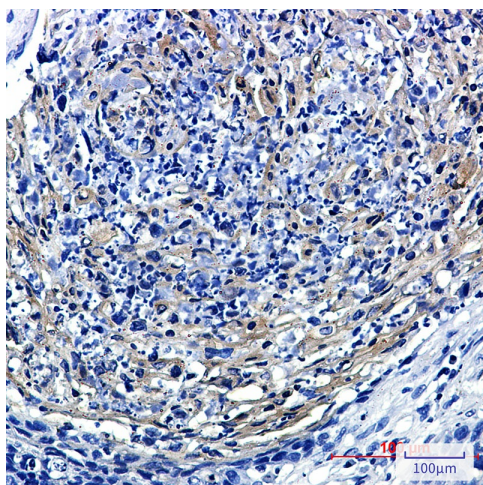


[View online »](#)

Product images:



Western blot analysis of PRMT3 in rat Brain, C6, 3T3, HeLa lysates using PRMT3 antibody.



Immunohistochemistry analysis of paraffin-embedded Human lung cancer using PRMT3 antibody. High-pressure and temperature Sodium Citrate pH 6.0 was used for antigen retrieval.