

Product datasheet for **TA385055**

PKC mu (PRKD1) Rabbit Polyclonal Antibody

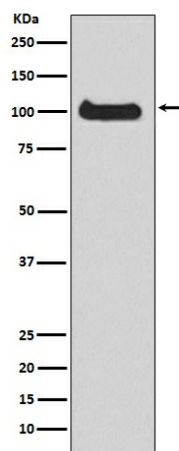
Product data:

Product Type:	Primary Antibodies
Applications:	WB
Recommended Dilution:	WB: 1/500-1/2000
Reactivity:	Human, Mouse, Rat
Host:	Rabbit
Isotype:	IgG
Clonality:	Polyclonal
Immunogen:	A synthesized peptide derived from human PKC mu
Formulation:	Rabbit IgG in phosphate buffered saline , pH 7.4, 150mM NaCl, 0.02% sodium azide and 50% glycerol.
Concentration:	lot specific
Purification:	Affinity Chromatography
Conjugation:	Unconjugated
Storage:	Store at 4°C short term. Aliquot and store at -20°C long term. Avoid freeze/thaw cycles.
Stability:	1 year
Predicted Protein Size:	102kDa
Gene Name:	protein kinase D1
Database Link:	Entrez Gene 5587 Human Q15139
Background:	Swiss-Prot Acc.Q15139. Converts transient diacylglycerol (DAG) signals into prolonged physiological effects, downstream of PKC. Involved in resistance to oxidative stress through activation of NF-kappa-B.
Synonyms:	nPKC-D1; nPKC-mu; PKC-mu; PKCM; PKD; PKD1; PRKCM



[View online »](#)

Product images:



Western blot analysis of PKC mu in HeLa lysates using PKD1 antibody.