

## Product datasheet for **TA385053**

### PKC theta (PRKCQ) Rabbit Polyclonal Antibody

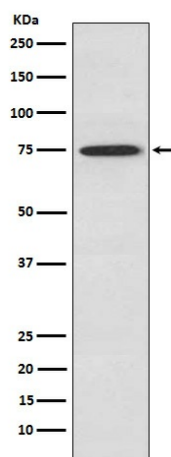
#### Product data:

Product Type:	Primary Antibodies
Applications:	WB
Recommended Dilution:	WB: 1/500-1/2000
Reactivity:	Human, Mouse, Rat
Host:	Rabbit
Isotype:	IgG
Clonality:	Polyclonal
Immunogen:	A synthesized peptide derived from human PKC theta
Formulation:	Rabbit IgG in phosphate buffered saline , pH 7.4, 150mM NaCl, 0.02% sodium azide and 50% glycerol.
Concentration:	lot specific
Purification:	Affinity Chromatography
Conjugation:	Unconjugated
Storage:	Store at 4°C short term. Aliquot and store at -20°C long term. Avoid freeze/thaw cycles.
Stability:	1 year
Predicted Protein Size:	82kDa
Gene Name:	protein kinase C theta
Database Link:	<a href="#">Entrez Gene 5588 Human Q04759</a>
Background:	Swiss-Prot Acc.Q04759.This is a calcium-independent, phospholipid-dependent, serine- and threonine-specific enzyme. Essential for T-cell receptor (TCR)-mediated T-cell activation, but is dispensable during TCR-dependent thymocyte development.
Synonyms:	MGC126514; MGC141919; nPKC-theta; PRKCT



[View online »](#)

## Product images:



Western blot analysis of PKC theta in Jurkat lysates using PKC theta antibody.