

Product datasheet for **TA385052**

PKC eta (PRKCH) Rabbit Polyclonal Antibody

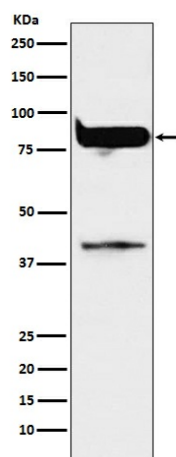
Product data:

Product Type:	Primary Antibodies
Applications:	IP, WB
Recommended Dilution:	WB: 1/500-1/2000 IP: 1/50
Reactivity:	Human, Mouse, Rat
Host:	Rabbit
Isotype:	IgG
Clonality:	Polyclonal
Immunogen:	A synthesized peptide derived from human PKC eta
Formulation:	Rabbit IgG in phosphate buffered saline , pH 7.4, 150mM NaCl, 0.02% sodium azide and 50% glycerol.
Concentration:	lot specific
Purification:	Affinity Chromatography
Conjugation:	Unconjugated
Storage:	Store at 4°C short term. Aliquot and store at -20°C long term. Avoid freeze/thaw cycles.
Stability:	1 year
Predicted Protein Size:	40,78kDa
Gene Name:	protein kinase C eta
Database Link:	Entrez Gene 5583 Human P24723
Background:	Swiss-Prot Acc.P24723.PKC is activated by diacylglycerol which in turn phosphorylates a range of cellular proteins. PKC also serves as the receptor for phorbol esters, a class of tumor promoters.
Synonyms:	MGC5363; MGC26269; nPKC-eta; PKC-L; PKCL; PRKCL



[View online »](#)

Product images:



Western blot analysis of PKC eta in MCF-7 lysates using PKC eta antibody.