

## Product datasheet for **TA385050S**

### PKC beta 1 (PRKCB) Rabbit Monoclonal Antibody [Clone ID: R06-0C2]

#### Product data:

Product Type:	Primary Antibodies
Clone Name:	R06-0C2
Applications:	IF, IHC, IP, WB
Recommended Dilution:	WB: 1/500-1/2000 IHC: 1/50-1/200 ICC/IF: 1/50-1/200 IP: 1/50
Reactivity:	Human, Rat
Host:	Rabbit
Isotype:	IgG
Clonality:	Monoclonal
Immunogen:	A synthesized peptide derived from human PKC beta 2
Formulation:	50mM Tris-Glycine(pH 7.4), 0.15M NaCl, 40% Glycerol, 0.01% Sodium azide and 0.05% BSA
Concentration:	lot specific
Purification:	Affinity Purified
Conjugation:	Unconjugated
Storage:	Store at 4°C short term. Aliquot and store at -20°C long term. Avoid freeze/thaw cycles.
Stability:	1 year
Predicted Protein Size:	77kDa
Gene Name:	protein kinase C beta
Database Link:	<a href="#">Entrez Gene 5579 Human P05771</a>



[View online »](#)

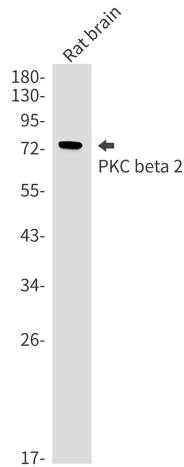
**Background:**

Swiss-Prot Acc.P05771.Calcium-activated, phospholipid- and diacylglycerol (DAG)-dependent serine/threonine-protein kinase involved in various cellular processes such as regulation of the B-cell receptor (BCR) signalosome, oxidative stress-induced apoptosis, androgen receptor-dependent transcription regulation, insulin signaling and endothelial cells proliferation. Plays a key role in B-cell activation by regulating BCR-induced NF-kappa-B activation. Mediates the activation of the canonical NF-kappa-B pathway (NFKB1) by direct phosphorylation of CARD11/CARMA1 at 'Ser-559', 'Ser-644' and 'Ser-652'.

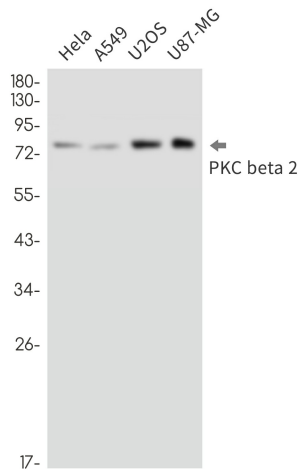
**Synonyms:**

MGC41878; PKC-B; PKC-beta; PKCB; PRKCB1; PRKCB2

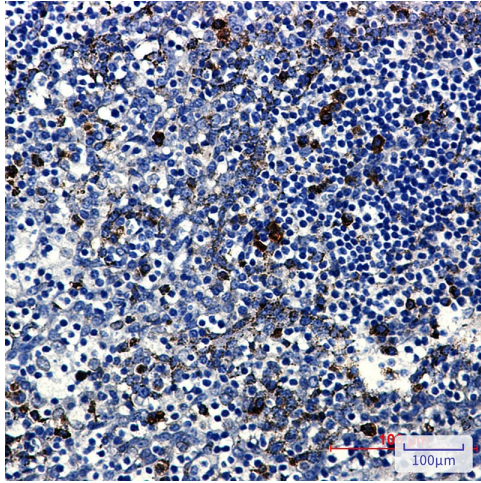
**Product images:**



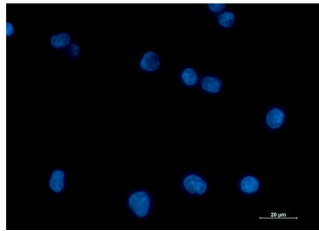
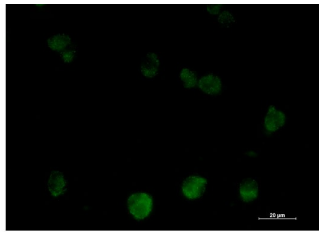
Western blot analysis of PKC beta 2 in rat brain lysates using PKC beta 2 antibody.Observed band size:77kDa.



Western blot analysis of PKC beta 2 in HeLa, A549, U2OS, U87-MG lysates using PKC beta 2 antibody



Immunohistochemistry analysis of paraffin-embedded Human tonsil using PKC beta 2 antibody. High-pressure and temperature Sodium Citrate pH 6.0 was used for antigen retrieval.



Immunocytochemistry analysis of PKC beta 2 (green) in K562 using PKC beta 2 antibody, and DAPI (blue).