

Product datasheet for **TA385046S**

PKC alpha (PRKCA) Rabbit Polyclonal Antibody

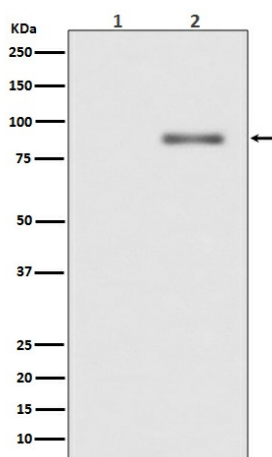
Product data:

Product Type:	Primary Antibodies
Applications:	IF, IHC, IP, WB
Recommended Dilution:	WB: 1/1000-1/5000 IHC: 1/50-1/200 ICC/IF: 1/50-1/200 IP: 1/50
Reactivity:	Human, Mouse, Rat
Host:	Rabbit
Isotype:	IgG
Clonality:	Polyclonal
Immunogen:	A synthesized peptide derived from human Phospho-PKC alpha (T638) (Phosphorylated)
Formulation:	Rabbit IgG in phosphate buffered saline , pH 7.4, 150mM NaCl, 0.02% sodium azide and 50% glycerol.
Concentration:	lot specific
Purification:	Affinity Chromatography
Conjugation:	Unconjugated
Storage:	Store at 4°C short term. Aliquot and store at -20°C long term. Avoid freeze/thaw cycles.
Stability:	1 year
Predicted Protein Size:	80kDa
Gene Name:	protein kinase C alpha
Database Link:	Entrez Gene 5578 Human P17252
Background:	Swiss-Prot Acc.P17252.PKC alpha is an AGC kinase of the PKC family. A classical PKC downstream of many mitogenic and receptors. Classical PKCs are calcium-dependent enzymes that are activated by phosphatidylserine, diacylglycerol and phorbol esters.
Synonyms:	AAG6; MGC129900; MGC129901; PKC-A; PKC-alpha; PKCA; PRKACA



[View online »](#)

Product images:



Western blot analysis of Phospho-PKC alpha (T638) expression in (1) Jurkat cell lysate treated with TPA; (2) Jurkat cell lysate.