

Product datasheet for **TA385046**

PKC alpha (PRKCA) Rabbit Polyclonal Antibody

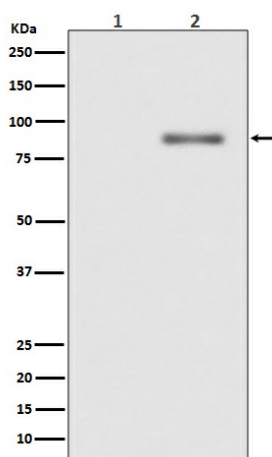
Product data:

| | |
|-------------------------|---|
| Product Type: | Primary Antibodies |
| Applications: | IF, IHC, IP, WB |
| Recommended Dilution: | WB: 1/1000-1/5000 IHC: 1/50-1/200 ICC/IF: 1/50-1/200 IP: 1/50 |
| Reactivity: | Human, Mouse, Rat |
| Host: | Rabbit |
| Isotype: | IgG |
| Clonality: | Polyclonal |
| Immunogen: | A synthesized peptide derived from human Phospho-PKC alpha (T638) (Phosphorylated) |
| Formulation: | Rabbit IgG in phosphate buffered saline , pH 7.4, 150mM NaCl, 0.02% sodium azide and 50% glycerol. |
| Concentration: | lot specific |
| Purification: | Affinity Chromatography |
| Conjugation: | Unconjugated |
| Storage: | Store at 4°C short term. Aliquot and store at -20°C long term. Avoid freeze/thaw cycles. |
| Stability: | 1 year |
| Predicted Protein Size: | 80kDa |
| Gene Name: | protein kinase C alpha |
| Database Link: | Entrez Gene 5578 Human P17252 |
| Background: | Swiss-Prot Acc.P17252.PKC alpha is an AGC kinase of the PKC family. A classical PKC downstream of many mitogenic and receptors. Classical PKCs are calcium-dependent enzymes that are activated by phosphatidylserine, diacylglycerol and phorbol esters. |
| Synonyms: | AAG6; MGC129900; MGC129901; PKC-A; PKC-alpha; PKCA; PRKACA |



[View online »](#)

Product images:



Western blot analysis of Phospho-PKC alpha (T638) expression in (1) Jurkat cell lysate treated with TPA; (2) Jurkat cell lysate.