

## Product datasheet for **TA385044**

### PKA R2 (PRKAR2A) Rabbit Polyclonal Antibody

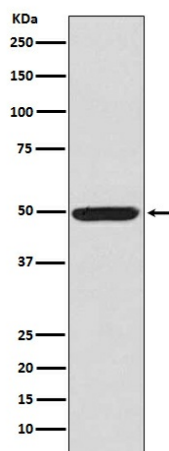
#### Product data:

Product Type:	Primary Antibodies
Applications:	IF, IHC, IP, WB
Recommended Dilution:	WB: 1/500-1/2000 IHC: 1/50-1/200 ICC/IF: 1/50-1/200 IP: 1/50
Reactivity:	Human, Mouse, Rat, Pig
Host:	Rabbit
Isotype:	IgG
Clonality:	Polyclonal
Immunogen:	A synthesized peptide derived from human Phospho-PKA R2 (S99) (Phosphorylated)
Formulation:	Rabbit IgG in phosphate buffered saline , pH 7.4, 150mM NaCl, 0.02% sodium azide and 50% glycerol.
Concentration:	lot specific
Purification:	Affinity Chromatography
Conjugation:	Unconjugated
Storage:	Store at 4°C short term. Aliquot and store at -20°C long term. Avoid freeze/thaw cycles.
Stability:	1 year
Predicted Protein Size:	51kDa
Gene Name:	protein kinase cAMP-dependent type II regulatory subunit alpha
Database Link:	<a href="#">Entrez Gene 5576 Human P13861</a>
Background:	Swiss-Prot Acc.P13861.Regulatory subunit of the cAMP-dependent protein kinases involved in cAMP signaling in cells. Type II regulatory chains mediate membrane association by binding to anchoring proteins, including the MAP2 kinase.
Synonyms:	MGC3606; OTTHUMP00000210266; PKR2; PRKAR2



[View online »](#)

## Product images:



Western blot analysis of Phospho-PKA R2 (Ser99) in K562 lysates using Phospho-PKA RII alpha (Ser99) antibody.