

## Product datasheet for **TA385043**

### PRKACG Rabbit Monoclonal Antibody [Clone ID: R01-8I1]

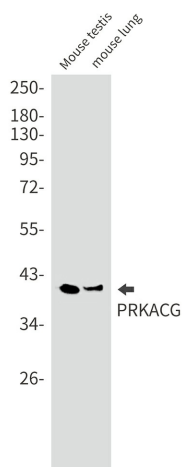
#### Product data:

Product Type:	Primary Antibodies
Clone Name:	R01-8I1
Applications:	IP, WB
Recommended Dilution:	WB: 1/1000-1/100 IP: 1/20-1/50
Reactivity:	Human, Mouse, Rat
Host:	Rabbit
Isotype:	IgG
Clonality:	Monoclonal
Immunogen:	Recombinant protein of human PRKACG
Formulation:	50mM Tris-Glycine(pH 7.4), 0.15M NaCl, 40% Glycerol, 0.01% Sodium azide and 0.05% BSA
Concentration:	lot specific
Purification:	Affinity Purified
Conjugation:	Unconjugated
Storage:	Store at 4°C short term. Aliquot and store at -20°C long term. Avoid freeze/thaw cycles.
Stability:	1 year
Predicted Protein Size:	Calculated MW: 40 kDa; Observed MW: 40 kDa
Gene Name:	protein kinase cAMP-activated catalytic subunit gamma
Database Link:	<a href="#">Entrez Gene 5568 Human P22612</a>
Background:	Swiss-Prot Acc.P22612.Phosphorylates a large number of substrates in the cytoplasm and the nucleus.
Synonyms:	KAPG; PKACg

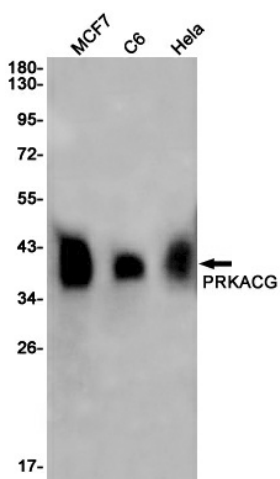


[View online »](#)

Product images:



Western blot analysis of PRKACG in mouse testis, mouse lung lysates using PKA C gamma antibody.



Western blot analysis of PRKACG in MCF-7, C6, HeLa lysates using PRKACG antibody.