

Product datasheet for **TA385042**

PRKACA Rabbit Polyclonal Antibody

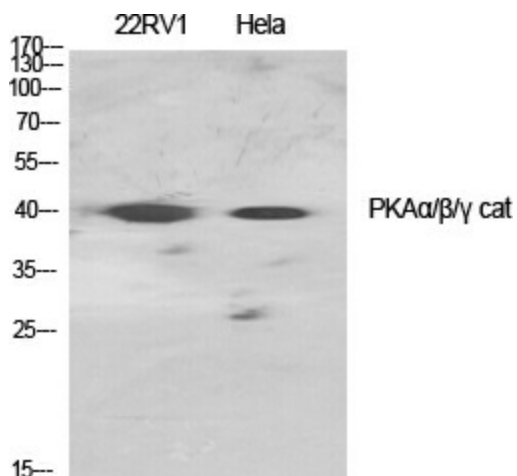
Product data:

Product Type:	Primary Antibodies
Applications:	ELISA, IF, IHC, WB
Recommended Dilution:	WB: 1/500-1/2000 IHC: 1/100-1/300 IF: 1/200-1/1000 ELISA: 1/20000
Reactivity:	Human, Mouse, Rat
Host:	Rabbit
Isotype:	IgG
Clonality:	Polyclonal
Immunogen:	The antiserum was produced against synthesized peptide derived from human PKA alpha/beta CAT. AA range:166-215
Formulation:	Liquid in PBS containing 50% glycerol, 0.5% BSA and 0.02% sodium azide, pH 7.3.
Concentration:	lot specific
Purification:	Affinity Purified
Conjugation:	Unconjugated
Storage:	Store at 4°C short term. Aliquot and store at -20°C long term. Avoid freeze/thaw cycles.
Stability:	1 year
Predicted Protein Size:	Observed MW (kDa):40
Gene Name:	protein kinase cAMP-activated catalytic subunit alpha
Database Link:	Entrez Gene 5566 Human P17612
Background:	Swiss-Prot Acc.P17612/P22694/P22612.
Synonyms:	MGC48865; MGC102831; PKACA

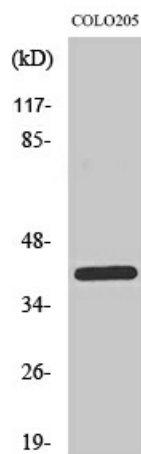


[View online »](#)

Product images:



Western blot analysis of cAMP Protein Kinase Catalytic Subunit in various lysates using cAMP Protein Kinase Catalytic Subunit antibody.



Western blot analysis of cAMP Protein Kinase Catalytic Subunit in COLO205 lysates using PKA α / β / γ cat antibody.