

## Product datasheet for **TA385040S**

### AMPK beta 1 (PRKAB1) Rabbit Polyclonal Antibody

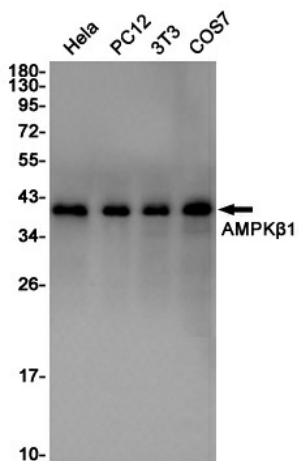
#### Product data:

Product Type:	Primary Antibodies
Applications:	FC, IHC, IP, WB
Recommended Dilution:	WB: 1/1000 IHC: 1/20-1/500 FC: 1/20 IP: 1/20
Reactivity:	Human, Mouse, Rat
Host:	Rabbit
Isotype:	IgG
Clonality:	Polyclonal
Immunogen:	A synthetic peptide of human AMPK beta 1
Formulation:	50mM Tris-Glycine(pH 7.4), 0.15M NaCl, 40% Glycerol, 0.01% Sodium azide and 0.05% BSA
Concentration:	lot specific
Purification:	Affinity Purified
Conjugation:	Unconjugated
Storage:	Store at 4°C short term. Aliquot and store at -20°C long term. Avoid freeze/thaw cycles.
Stability:	1 year
Predicted Protein Size:	Calculated MW: 30 kDa; Observed MW: 38 kDa
Gene Name:	protein kinase AMP-activated non-catalytic subunit beta 1
Database Link:	<a href="#">Entrez Gene 5564 Human Q9Y478</a>
Background:	Swiss-Prot Acc.Q9Y478.
Synonyms:	AMPK; AMPKb; HAMPKb; MGC17785



[View online »](#)

## Product images:



Western blot analysis of AMPK $\beta$ 1 in HeLa, PC-12, 3T3, COS7 lysates using AMPK beta 1 antibody.