

Product datasheet for **TA385040**

AMPK beta 1 (PRKAB1) Rabbit Polyclonal Antibody

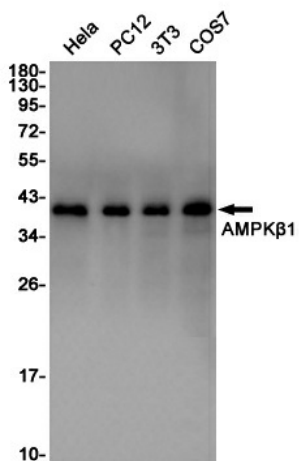
Product data:

| | |
|-------------------------|--|
| Product Type: | Primary Antibodies |
| Applications: | FC, IHC, IP, WB |
| Recommended Dilution: | WB: 1/1000 IHC: 1/20-1/500 FC: 1/20 IP: 1/20 |
| Reactivity: | Human, Mouse, Rat |
| Host: | Rabbit |
| Isotype: | IgG |
| Clonality: | Polyclonal |
| Immunogen: | A synthetic peptide of human AMPK beta 1 |
| Formulation: | 50mM Tris-Glycine(pH 7.4), 0.15M NaCl, 40% Glycerol, 0.01% Sodium azide and 0.05% BSA |
| Concentration: | lot specific |
| Purification: | Affinity Purified |
| Conjugation: | Unconjugated |
| Storage: | Store at 4°C short term. Aliquot and store at -20°C long term. Avoid freeze/thaw cycles. |
| Stability: | 1 year |
| Predicted Protein Size: | Calculated MW: 30 kDa; Observed MW: 38 kDa |
| Gene Name: | protein kinase AMP-activated non-catalytic subunit beta 1 |
| Database Link: | Entrez Gene 5564 Human Q9Y478 |
| Background: | Swiss-Prot Acc.Q9Y478. |
| Synonyms: | AMPK; AMPKb; HAMPKb; MGC17785 |



[View online »](#)

Product images:



Western blot analysis of AMPK β 1 in HeLa, PC-12, 3T3, COS7 lysates using AMPK beta 1 antibody.