

Product datasheet for **TA385037**

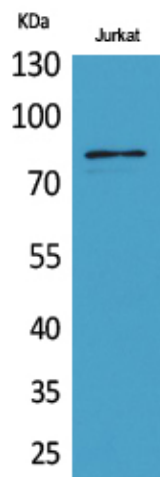
PREP Rabbit Polyclonal Antibody

Product data:

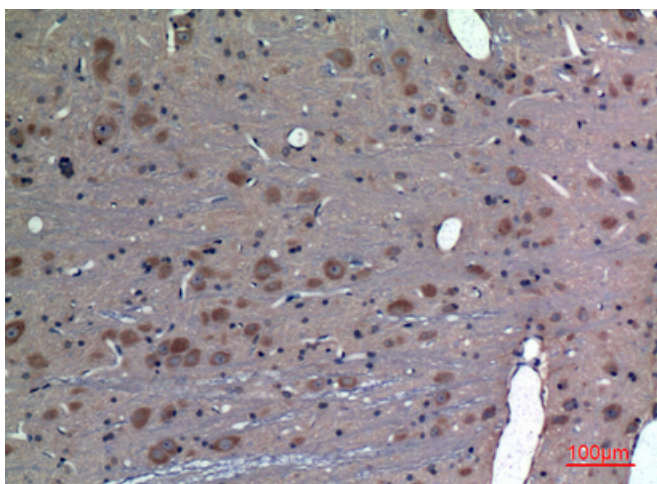
Product Type:	Primary Antibodies
Applications:	ELISA, IHC, WB
Recommended Dilution:	WB: 1/500-1/2000 IHC-p: 1/100-300 ELISA: 1/20000
Reactivity:	Human, Mouse, Rat
Host:	Rabbit
Isotype:	IgG
Clonality:	Polyclonal
Immunogen:	Synthesized peptide derived from PREP . at AA range: 10-90
Formulation:	Liquid in PBS containing 50% glycerol, 0.5% BSA and 0.02% sodium azide, pH 7.3.
Concentration:	lot specific
Purification:	Affinity Purified
Conjugation:	Unconjugated
Storage:	Store at 4°C short term. Aliquot and store at -20°C long term. Avoid freeze/thaw cycles.
Stability:	1 year
Predicted Protein Size:	Observed MW (kDa):80
Database Link:	Q8N6D4
Background:	Swiss-Prot Acc.Q8N6D4.



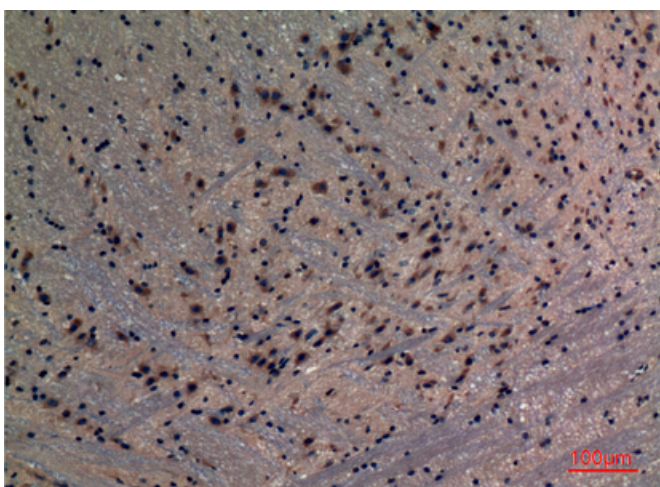
[View online »](#)

Product images:

Western blot analysis of PREP in Jurkat lysates using PREP antibody.



Immunohistochemistry analysis of paraffin-embedded rat brain using PREP antibody. High-pressure and temperature Sodium Citrate pH 6.0 was used for antigen retrieval.



Immunohistochemistry analysis of paraffin-embedded mouse brain using PREP antibody. High-pressure and temperature Sodium Citrate pH 6.0 was used for antigen retrieval.