

Product datasheet for **TA385030**

PP2A-alpha (PPP2CA) Rabbit Monoclonal Antibody [Clone ID: R06-8A4]

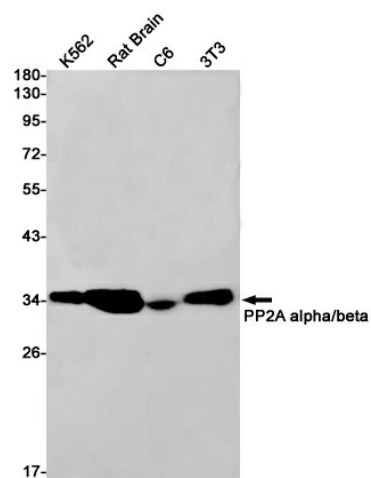
Product data:

Product Type:	Primary Antibodies
Clone Name:	R06-8A4
Applications:	IP, WB
Recommended Dilution:	WB: 1/1000-1/100 IP: 1/50
Reactivity:	Human, Mouse, Rat
Host:	Rabbit
Isotype:	IgG
Clonality:	Monoclonal
Immunogen:	A synthetic peptide of human PP2A alpha
Formulation:	50mM Tris-Glycine(pH 7.4), 0.15M NaCl, 40% Glycerol, 0.01% Sodium azide and 0.05% BSA
Concentration:	lot specific
Purification:	Affinity Purified
Conjugation:	Unconjugated
Storage:	Store at 4°C short term. Aliquot and store at -20°C long term. Avoid freeze/thaw cycles.
Stability:	1 year
Predicted Protein Size:	Calculated MW: 36 kDa; Observed MW: 36 kDa
Gene Name:	protein phosphatase 2 catalytic subunit alpha
Database Link:	Entrez Gene 5515 Human P67775
Background:	Swiss-Prot Acc.P67775.PP2A is the major phosphatase for microtubule-associated proteins (MAPs). PP2A can modulate the activity of phosphorylase B kinase casein kinase 2, mitogen-stimulated S6 kinase, and MAP-2 kinase. Cooperates with SGO2 to protect centromeric cohesin from separase-mediated cleavage in oocytes specifically during meiosis I. Can dephosphorylate SV40 large T antigen and p53/TP53. Activates RAF1 by dephosphorylating it at 'Ser-259'.
Synonyms:	PP2A-alpha; PP2Ac; PP2CA; PP2Calpha; RP-C



[View online »](#)

Product images:



Western blot analysis of PP2A alpha/beta in K562, rat Brain, C6, 3T3 lysates using PP2A alpha/beta antibody.