

Product datasheet for **TA385029**

PP2A-alpha (PPP2CA) Rabbit Polyclonal Antibody

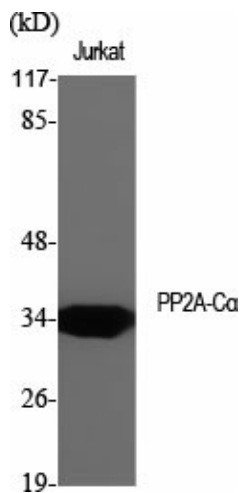
Product data:

Product Type:	Primary Antibodies
Applications:	ELISA, IF, IHC, WB
Recommended Dilution:	WB: 1/500-1/2000 IHC: 1/100-1/300 IF: 1/200-1/1000 ELISA: 1/5000
Reactivity:	Human, Mouse, Rat
Host:	Rabbit
Isotype:	IgG
Clonality:	Polyclonal
Immunogen:	The antiserum was produced against synthesized peptide derived from human PP2A-alpha. AA range:260-309
Formulation:	Liquid in PBS containing 50% glycerol, 0.5% BSA and 0.02% sodium azide, pH 7.3.
Concentration:	lot specific
Purification:	Affinity Purified
Conjugation:	Unconjugated
Storage:	Store at 4°C short term. Aliquot and store at -20°C long term. Avoid freeze/thaw cycles.
Stability:	1 year
Predicted Protein Size:	Observed MW (kDa):35
Gene Name:	protein phosphatase 2 catalytic subunit alpha
Database Link:	Entrez Gene 5515 Human P67775
Background:	Swiss-Prot Acc.P67775.
Synonyms:	PP2A-alpha; PP2Ac; PP2CA; PP2Calpha; RP-C

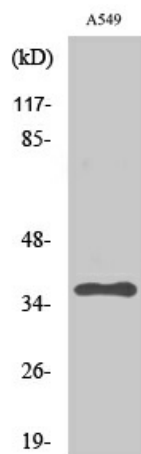


[View online »](#)

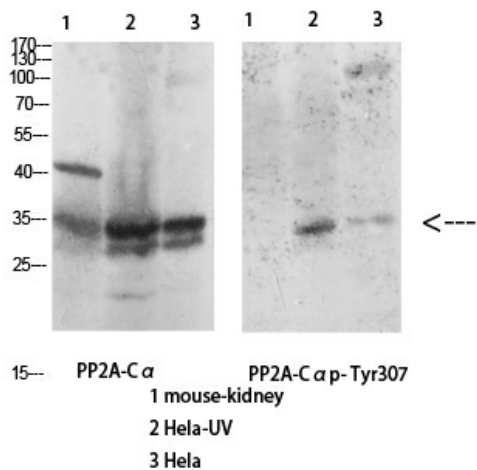
Product images:



Western blot analysis of PP2A alpha in various lysates using PP2A alpha antibody.



Western blot analysis of PP2A alpha in A549 lysates using PP2ACα antibody.



Western blot analysis of PP2A alpha in various lysates using PP2A alpha antibody.