

Product datasheet for **TA385028**

DARPP32 (PPP1R1B) Rabbit Polyclonal Antibody

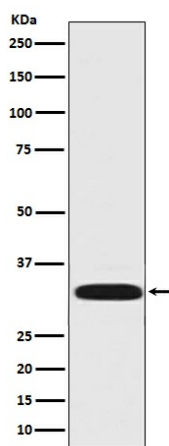
Product data:

Product Type:	Primary Antibodies
Applications:	IF, IHC, IP, WB
Recommended Dilution:	WB: 1/1000-1/2000 IHC: 1/50-1/200 ICC/IF: 1/50-1/100 IP: 1/20
Reactivity:	Human, Mouse, Rat
Host:	Rabbit
Isotype:	IgG
Clonality:	Polyclonal
Immunogen:	A synthesized peptide derived from human DARPP32
Formulation:	Rabbit IgG in phosphate buffered saline , pH 7.4, 150mM NaCl, 0.02% sodium azide and 50% glycerol.
Concentration:	lot specific
Purification:	Affinity Chromatography
Conjugation:	Unconjugated
Storage:	Store at 4°C short term. Aliquot and store at -20°C long term. Avoid freeze/thaw cycles.
Stability:	1 year
Predicted Protein Size:	32kDa
Gene Name:	protein phosphatase 1 regulatory inhibitor subunit 1B
Database Link:	Entrez Gene 84152 Human Q9UD71
Background:	Swiss-Prot Acc.Q9UD71.DARPP-32 a member of the protein phosphatase inhibitor 1 family. A dopamine- and cyclic AMP-regulated neuronal phosphoprotein. Both dopaminergic and glutamatergic (NMDA) receptor stimulation regulate the extent of DARPP32 phosphorylation, but in opposite directions.
Synonyms:	DARPP-32; DARPP32; FLJ20940; OTTHUMP00000164276



[View online »](#)

Product images:



Western blot analysis of DARPP32 in rat brain lysates using DARPP32 antibody.