

Product datasheet for **TA385025**

Myosin Phosphatase (PPP1R12A) Rabbit Polyclonal Antibody

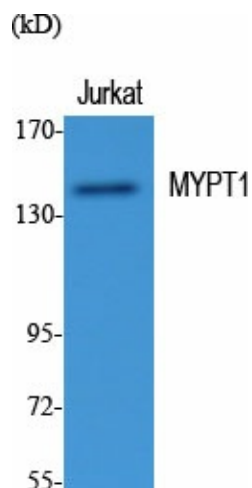
Product data:

Product Type:	Primary Antibodies
Applications:	ELISA, IHC, WB
Recommended Dilution:	WB: 1/500-1/2000 IHC: 1/100-1/300 ELISA: 1/5000
Reactivity:	Human, Mouse, Rat, Monkey
Host:	Rabbit
Isotype:	IgG
Clonality:	Polyclonal
Immunogen:	The antiserum was produced against synthesized peptide derived from human MYPT1. AA range:661-710
Formulation:	Liquid in PBS containing 50% glycerol, 0.5% BSA and 0.02% sodium azide, pH 7.3.
Concentration:	lot specific
Purification:	Affinity Chromatography
Conjugation:	Unconjugated
Storage:	Store at 4°C short term. Aliquot and store at -20°C long term. Avoid freeze/thaw cycles.
Stability:	1 year
Predicted Protein Size:	Observed MW (kDa):140
Gene Name:	protein phosphatase 1 regulatory subunit 12A
Database Link:	Entrez Gene 4659 Human O14974
Background:	Swiss-Prot Acc.O14974.Key regulator of protein phosphatase 1C (PPP1C). Mediates binding to myosin. As part of the PPP1C complex, involved in dephosphorylation of PLK1. Capable of inhibiting HIF1AN-dependent suppression of HIF1A activity.
Synonyms:	MBS; MGC133042; MYPT1

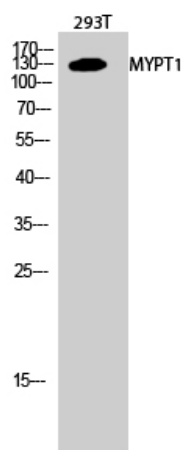


[View online »](#)

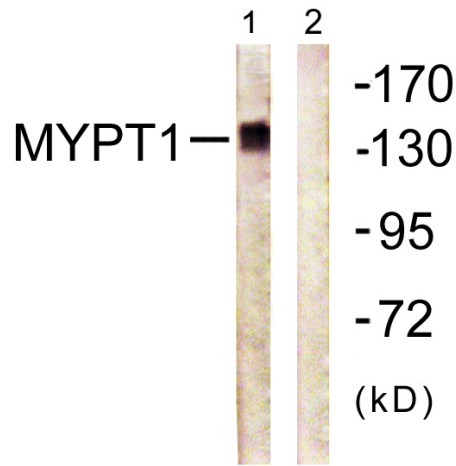
Product images:



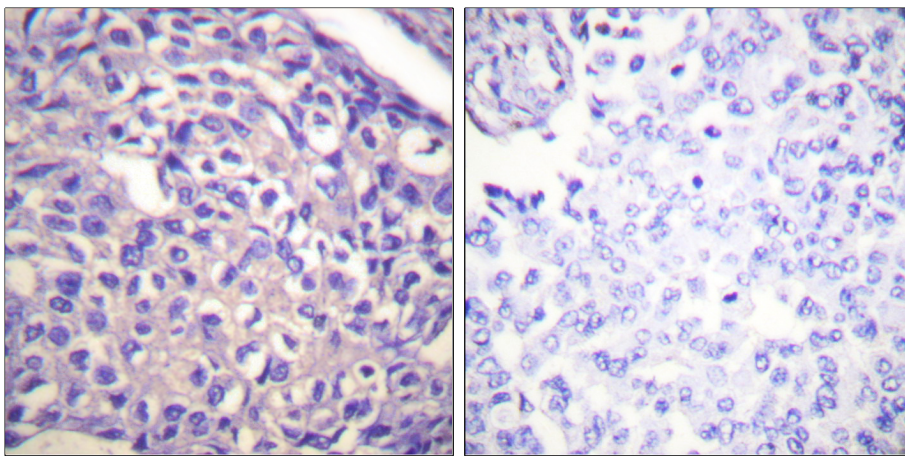
Western blot analysis of Myosin Phosphatase in various lysates using Myosin Phosphatase antibody.



Western blot analysis of Myosin Phosphatase in 293T lysates using MYPT1 antibody.



Western blot analysis of Myosin Phosphatase in COS7 lysates using Myosin Phosphatase antibody. The lane on the right is blocked with the synthesized peptide.



Immunohistochemistry analysis of paraffin-embedded Human breast carcinoma tissue using MYPT1 antibody. High-pressure and temperature Sodium Citrate pH 6.0 was used for antigen retrieval. Sample with blocking peptide on the right.