

Product datasheet for **TA385023M**

Cyclophilin F (PPIF) Rabbit Monoclonal Antibody [Clone ID: R02-6I9]

Product data:

Product Type:	Primary Antibodies
Clone Name:	R02-6I9
Applications:	IHC, WB
Recommended Dilution:	WB: 1/1000 IHC: 1/500
Reactivity:	Human, Mouse, Rat
Host:	Rabbit
Isotype:	IgG
Clonality:	Monoclonal
Immunogen:	A synthetic peptide of human Cyclophilin F
Formulation:	50mM Tris-Glycine(pH 7.4), 0.15M NaCl, 40% Glycerol, 0.01% Sodium azide and 0.05% BSA
Concentration:	lot specific
Purification:	Affinity Purified
Conjugation:	Unconjugated
Storage:	Store at 4°C short term. Aliquot and store at -20°C long term. Avoid freeze/thaw cycles.
Stability:	1 year
Predicted Protein Size:	Calculated MW: 22 kDa; Observed MW: 18 kDa
Gene Name:	peptidylprolyl isomerase F
Database Link:	Entrez Gene 10105 Human P30405

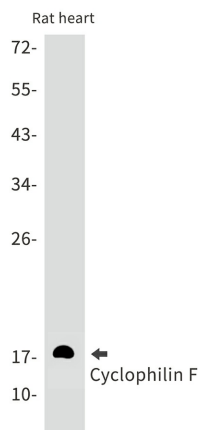
[View online »](#)

Background:

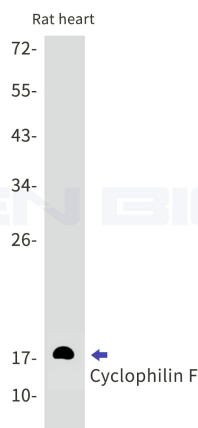
Swiss-Prot Acc.P30405.PPIase that catalyzes the cis-trans isomerization of proline imidic peptide bonds in oligopeptides and may therefore assist protein folding (PubMed:20676357). Involved in regulation of the mitochondrial permeability transition pore (mPTP). It is proposed that its association with the mPTP is masking a binding site for inhibiting inorganic phosphate (Pi) and promotes the open probability of the mPTP leading to apoptosis or necrosis; the requirement of the PPIase activity for this function is debated. In cooperation with mitochondrial TP53 is involved in activating oxidative stress-induced necrosis. Involved in modulation of mitochondrial membrane F1F0 ATP synthase activity and regulation of mitochondrial matrix adenine nucleotide levels. Has anti-apoptotic activity independently of mPTP and in cooperation with BCL2 inhibits cytochrome c-dependent apoptosis.

Synonyms:

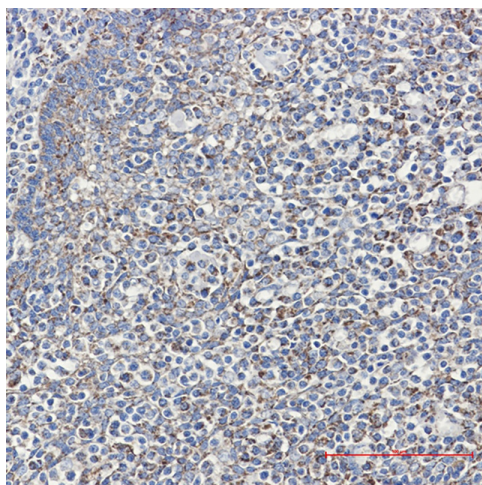
Cyp-D; CYP3; FLJ90798; hCyP3; MGC117207; PPIase; rotamase

Product images:


Western blot analysis of Cyclophilin F in rat heart lysates using Cyclophilin F antibody.



Western blot detection of Cyclophilin F in Rat heart lysates using Cyclophilin F antibody. Predicted band size: 22 kDa. Observed band size: 18 kDa.



Immunohistochemistry analysis of paraffin-embedded Human tonsil using Cyclophilin F antibody. High-pressure and temperature Sodium Citrate pH 6.0 was used for antigen retrieval.