

Product datasheet for **TA385022**

Cyclophilin F (PPIF) Rabbit Polyclonal Antibody

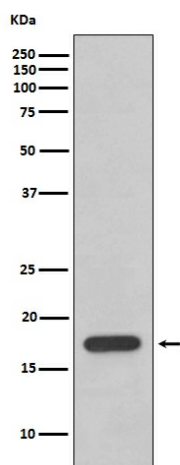
Product data:

Product Type:	Primary Antibodies
Applications:	IHC, IP, WB
Recommended Dilution:	WB: 1/500-1/2000 IHC: 1/50-1/200 IP: 1/50
Reactivity:	Human, Mouse, Rat
Host:	Rabbit
Isotype:	IgG
Clonality:	Polyclonal
Immunogen:	A synthesized peptide derived from human Cyclophilin F
Formulation:	Rabbit IgG in phosphate buffered saline , pH 7.4, 150mM NaCl, 0.02% sodium azide and 50% glycerol.
Concentration:	lot specific
Purification:	Affinity Chromatography
Conjugation:	Unconjugated
Storage:	Store at 4°C short term. Aliquot and store at -20°C long term. Avoid freeze/thaw cycles.
Stability:	1 year
Predicted Protein Size:	18kDa
Gene Name:	peptidylprolyl isomerase F
Database Link:	Entrez Gene 10105 Human P30405
Background:	Swiss-Prot Acc.P30405.PPIases accelerate the folding of proteins. It catalyzes the cis-trans isomerization of proline imidic peptide bonds in oligopeptides.
Synonyms:	Cyp-D; CYP3; FLJ90798; hCyP3; MGC117207; PPIase; rotamase



[View online »](#)

Product images:



Western blot analysis of Cyclophilin F in HeLa lysates using Cyclophilin F antibody.