

## Product datasheet for **TA385021**

### Cyclophilin B (PPIB) Rabbit Polyclonal Antibody

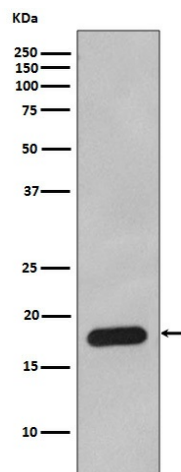
#### Product data:

Product Type:	Primary Antibodies
Applications:	WB
Recommended Dilution:	WB: 1/500-1/2000
Reactivity:	Human, Mouse, Rat
Host:	Rabbit
Isotype:	IgG
Clonality:	Polyclonal
Immunogen:	A synthesized peptide derived from human Cyclophilin B
Formulation:	Rabbit IgG in phosphate buffered saline , pH 7.4, 150mM NaCl, 0.02% sodium azide and 50% glycerol.
Concentration:	lot specific
Purification:	Affinity Chromatography
Conjugation:	Unconjugated
Storage:	Store at 4°C short term. Aliquot and store at -20°C long term. Avoid freeze/thaw cycles.
Stability:	1 year
Predicted Protein Size:	18kDa
Gene Name:	peptidylprolyl isomerase B
Database Link:	<a href="#">Entrez Gene 5479 Human P23284</a>
Background:	Swiss-Prot Acc.P23284.PPIases accelerate the folding of proteins. It catalyzes the cis-trans isomerization of proline imidic peptide bonds in oligopeptides.
Synonyms:	CYP-S1; CYPB; MGC2224; MGC14109; OI9; PPIase; rotamase; S-cyclophilin; SCYLP



[View online »](#)

## Product images:



Western blot analysis of Cyclophilin B in HepG2 lysates using Cyclophilin B antibody.