

Product datasheet for **TA385020M**

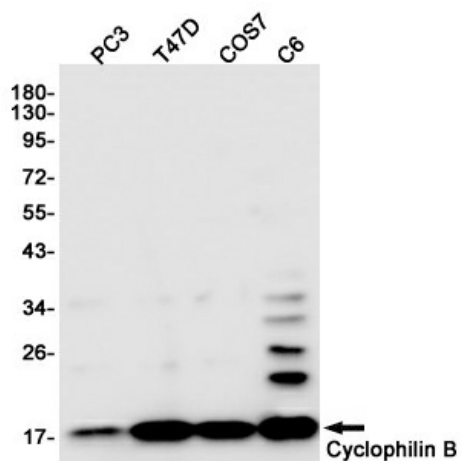
Cyclophilin B (PPIB) Mouse Monoclonal Antibody [Clone ID: 5F10-8G2-2D9]

Product data:

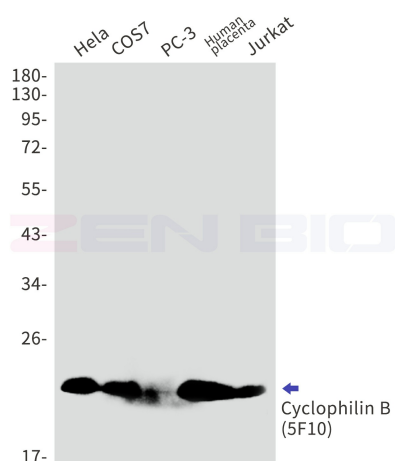
Product Type:	Primary Antibodies
Clone Name:	5F10-8G2-2D9
Applications:	IHC, WB
Recommended Dilution:	WB: 1/1000-2000 IHC: 1/100-200
Reactivity:	Human, Rat, Mouse
Host:	Mouse
Isotype:	IgG1
Clonality:	Monoclonal
Immunogen:	Synthetic peptide conjugated to KLH.
Formulation:	Liquid in PBS containing 50% glycerol, 0.5% BSA and 0.03% Proclin 300, pH 7.3.
Concentration:	lot specific
Purification:	Affinity Purified
Conjugation:	Unconjugated
Storage:	Store at 4°C short term. Aliquot and store at -20°C long term. Avoid freeze/thaw cycles.
Stability:	1 year
Predicted Protein Size:	21kDa
Gene Name:	peptidylprolyl isomerase B
Database Link:	Entrez Gene 5479 Human P23284
Background:	Swiss-Prot Acc.P23284.PPIases accelerate the folding of proteins. It catalyzes the cis-trans isomerization of proline imidic peptide bonds in oligopeptides.
Synonyms:	CYP-S1; CYPB; MGC2224; MGC14109; OI9; PPIase; rotamase; S-cyclophilin; SCYLP


[View online »](#)

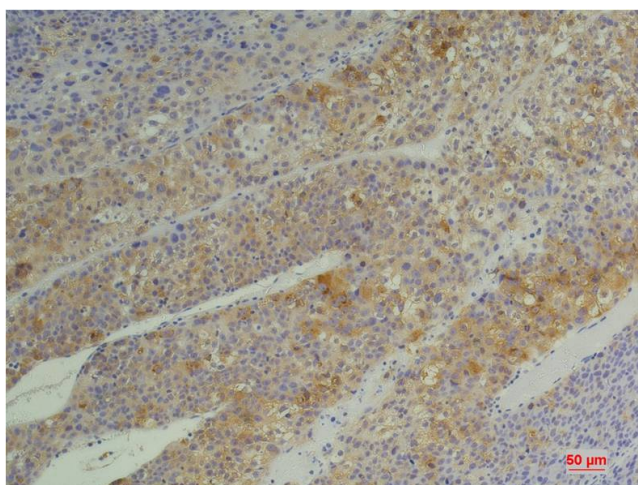
Product images:



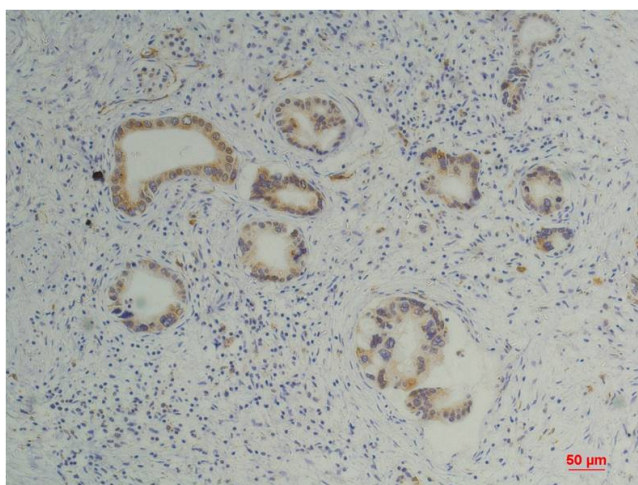
Western blot detection of Cyclophilin B in PC3, T47D, COS7, C6 cell lysates using Cyclophilin B (6H1) Mouse mAb (1:1000 diluted). Predicted band size: 21 kDa. Observed band size: 21 kDa.



Western blot detection of Cyclophilin B (5F10) in HeLa, COS7, PC-3, Human placenta, Jurkat cell lysates using Cyclophilin B (5F10) antibody. Observed band size: 21 kDa.



Immunohistochemistry analysis of paraffin-embedded Human Hepatocarcinoma using Cyclophilin B (5F10) antibody. High-pressure and temperature Sodium Citrate pH 6.0 was used for antigen retrieval.



Immunohistochemical analysis of paraffin-embedded Human Pancreatic Carcinoma using Cyclophilin B Mouse mAb diluted at 1:200.